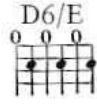


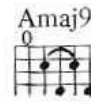
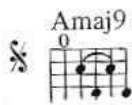
# The girls Mine

Words and Music by  
MICHAEL JACKSON

Moderately slow, in 2 (  $\text{♩} = \text{♩}^3$  )



*mf*

Ev - 'ry night she walks\_ right in \_\_\_ my dreams, since I  
un - der - stand\_ the way \_\_\_ you think, say - ing  
build your hopes\_ to be \_\_\_ let down, 'cause I

Amaj9

D6/E

Amaj9

D6/E

met her from the start. I'm so proud I am the on -  
 that she's yours, not mine. Send - ing ros - es and your sil -  
 real - ly feel it's time. I know she'll tell you I'm the one

Amaj9

F#7sus4

ly one who is spe - cial in her heart. The girl is mine,  
 ly dreams, real - ly just a waste of time, be - cause she's mine,  
 for her, 'cause she said I blow her mind. The girl is mine,

Bm7

Bm7/E

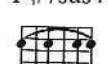
the dog - gone girl is mine.  
 the dog - gone girl is mine.  
 the dog - gone girl is mine.

Amaj9

D6/E

Amaj9

F#7sus4



Musical notation for the first system, including piano accompaniment and vocal line.

Bm7

Bm7/E



I know she's mine, —  
 Don't waste your time, —  
 Don't waste your time, — } be - cause the

Musical notation for the second system, including piano accompaniment and vocal line.

Amaj9

D6/E

To Coda



dog - gone girl is mine. —

Musical notation for the third system, including piano accompaniment and vocal line.

Amaj9

D/E

1.

2.



I don't I love you

Musical notation for the fourth system, including piano accompaniment and vocal line.

Amaj9



D6/E



Take you an - y - where.

more than he. \_\_\_\_\_

Amaj9



Lov - ing we \_\_\_\_\_

Well, I love you end - less - ly. \_\_\_\_\_

D6/E



will share.

Cmaj9



So come and go with me, two on the town. \_\_\_\_\_

Fmaj7



D/E



E6



But we both can-not have her, so it's



D/E



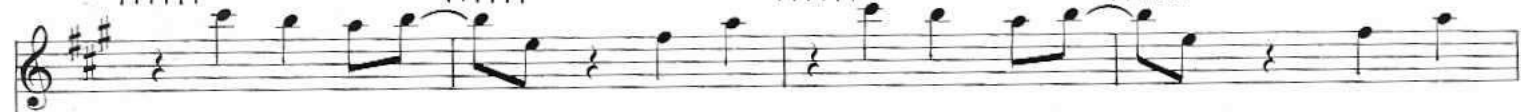
E6



D/E



E6



one or the oth-er. And one day you'll dis-cov-er that she's



D/E

*D. S. al Coda*

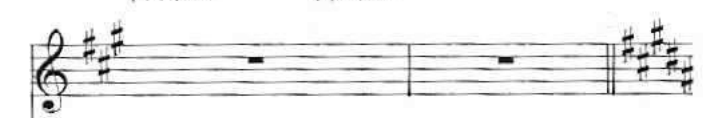
my girl for-ev-er and ev-er.

*Coda*

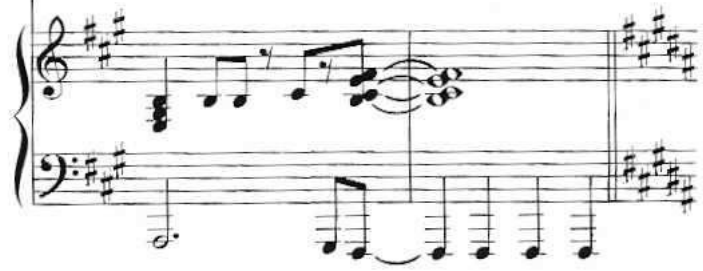
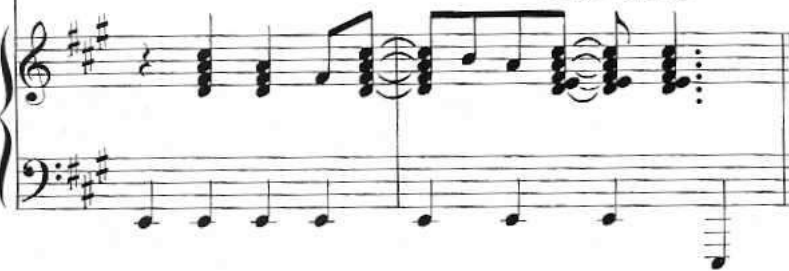
Amaj9



F#7sus4



Ah, don't

*Repeat (vocal ad lib) and fade*

Bmaj9



E6/F#



Bmaj9



E/F#

