

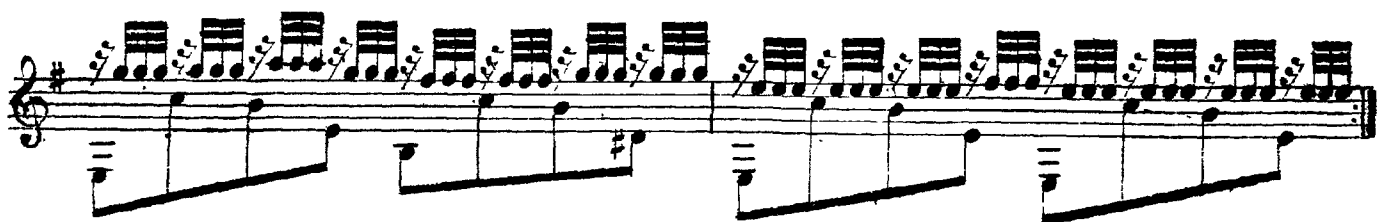
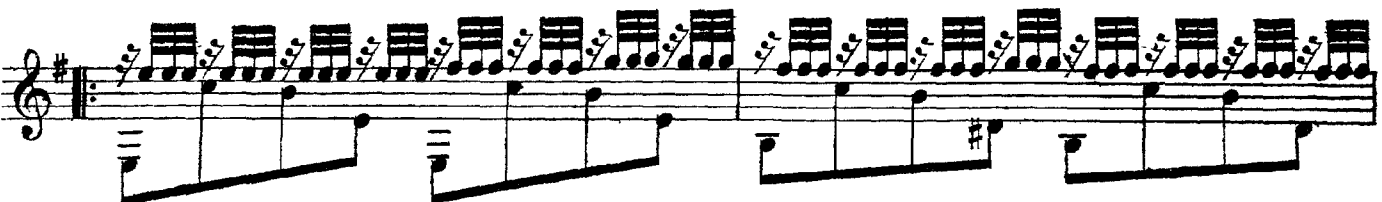
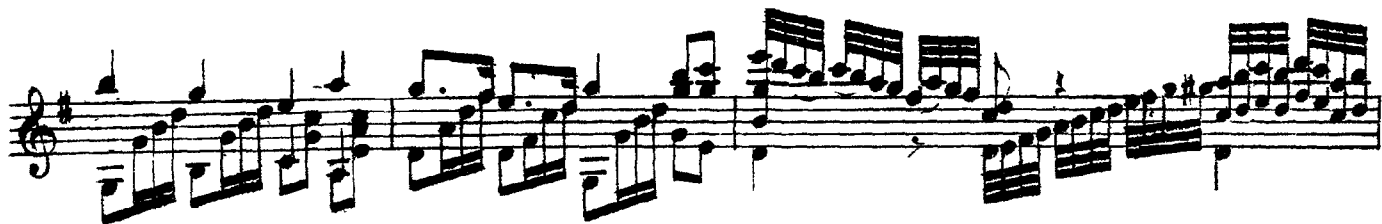
Marcha Funebre de Thalberg

Tempo di Marcha.

The image displays a musical score for the piece "Marcha Funebre de Thalberg" by Thalberg. The score is written for a single melodic line on a treble clef staff, with a key signature of one sharp (F#) and a 2/4 time signature. The tempo is marked "Tempo di Marcha." The score consists of ten staves of music. The first staff begins with a treble clef, a key signature of one sharp, and a 2/4 time signature. The music is characterized by a steady, rhythmic march pattern. The second staff contains the annotation "arm. 12" above the staff. The third staff contains the annotation "arm. 12" above the staff. The fourth staff contains the annotation "arm. 12" above the staff. The fifth staff contains the annotation "arm. 12" above the staff. The sixth staff contains the annotation "arm. 12" above the staff. The seventh staff contains the annotation "arm. 12" above the staff. The eighth staff contains the annotation "arm. 12" above the staff. The ninth staff contains the annotation "arm. 12" above the staff. The tenth staff contains the annotation "arm. 12" above the staff. The score concludes with a final cadence.

arm.
12

This image shows a page of musical notation for a piano piece. The music is written on eight staves, each beginning with a treble clef and a key signature of one sharp (F#). The tempo is marked 'arm.' (allegretto) with a metronome marking of 12. The notation is dense, featuring many notes, rests, and dynamic markings. The final staff concludes with a double bar line and a fermata over the final notes.



1^a

2^a

arm.

arm.

arm.

arm.

12

7 12

7 12

12