

I'll Cover You

Words and Music by
JONATHAN LARSON

Moderate Light Rock



mf

Introduction in 6/8 time, marked *mf*. The bass line consists of a steady eighth-note pattern: G2, B1, D2, G2, B1, D2.

G/C

Fmaj7

Male 1:
Live in my house, I'll be your shelter; just pay me

Vocal line: Live in my house, I'll be your shelter; just pay me

Piano accompaniment: Chords G/C and Fmaj7 are indicated above the vocal line.

C/G

G

F

back with one thousand kisses. Be my lover,

Vocal line: back with one thousand kisses. Be my lover,

Piano accompaniment: Chords C/G, G, and F are indicated above the vocal line.

G

C

and I'll cover you.

Vocal line: and I'll cover you.

Piano accompaniment: Chords G and C are indicated above the vocal line.

G/C



Male 2: O - pen your door, I'll be your ten - ant.

Fmaj7



C/G



G



Fmaj7



Don't got much bag - gage to lay at your feet, but sweet kiss - es

G



Fmaj7



I've got to spare. I'll be there, and I'll cov - er

G



Am



Fmaj7



you. Both: I think they meant it when they said you - can't

Gm

Eb maj7



Ab

Fm7

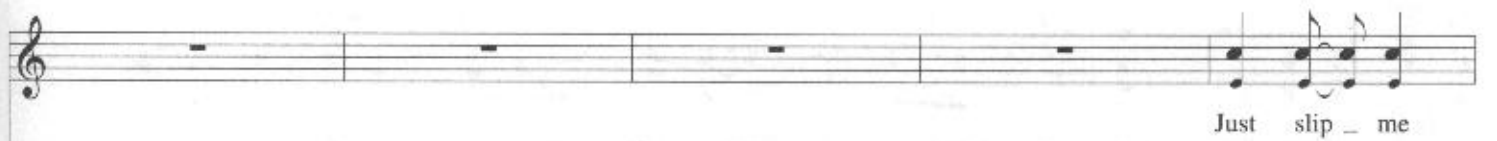
Cm



Eb sus

Eb

C



G/C  Fmaj7 



on, I'll be your blan - ket. Wher - ev - er, what - ev - er,



F/G  G  F  G 

I'll be your coat. *Male 1:* You'll be my king, and I'll be your



F  G 

Male 2: cas - tle. No, you'll be my queen, and I'll be your moat.



Am  Fmaj7  Gm 

Both: I think they meant it when they said you can't buy love. Now I know you can



Emaj7

Ab

Fm7

rent it. A new lease, you are my love on life,

Cm

Eb sus

Eb

F

all my life. I've longed to dis-

C/F

Bb/F

cover something as true as this is.

C/F

Bb (add9)

C (add9)

Male 1: If you're cold and you're
Male 2: So, with a thousand sweet kisses, I'll

Bb(add9)

lone - ly, _____

cov - er you. _____ With a thou - sand _____ sweet kiss - es, _____

you've - got

C(add9)

Bb(add9)

one nick - el on - ly, _____ with a thou - sand _____ sweet

I'll cov - er you _____

C(add9)

kiss - es, _____

when _____ you're worn out _____ and tired, _____

I'll cov - er you. _____ With a

Bb(add9)

C(add9)

thou - sand _____ sweet kiss - es, _____

when _____ your heart has ex - pired. _____

I'll cov - er you. _____

E \flat (add9)

D \flat (add9)

F(add9)

Chord diagrams for Eb(add9), Db(add9), and F(add9) are shown above the staff. The notation includes a treble clef, a key signature of one flat, and a 4/4 time signature. The first measure has a whole note chord Eb(add9). The second measure has a half note chord Db(add9) and a half note chord F(add9). The third measure has a whole note chord F(add9).

Both: Oh, _____ lov - er, _____ I'll cov - er you. _____

Piano accompaniment for the first system, including treble and bass staves. The treble staff features sustained chords and arpeggiated patterns. The bass staff features a steady eighth-note accompaniment.

E \flat (add9)

Chord diagram for Eb(add9) is shown above the staff. The notation includes a treble clef, a key signature of one flat, and a 4/4 time signature. The first measure has a whole note chord Eb(add9). The second measure has a whole note chord Eb(add9). The third measure has a whole note chord Eb(add9).

Oh, _____

Piano accompaniment for the second system, including treble and bass staves. The treble staff features a melodic line with eighth notes. The bass staff features a steady eighth-note accompaniment.

D \flat (add9)

F(add9)

Chord diagrams for Db(add9) and F(add9) are shown above the staff. The notation includes a treble clef, a key signature of one flat, and a 4/4 time signature. The first measure has a half note chord Db(add9) and a half note chord F(add9). The second measure has a half note chord F(add9) and a half note chord F(add9). The third measure has a whole note chord F(add9). The fourth measure has a whole note chord F(add9).

lov - er, _____ I'll cov - er _____ you. _____

Piano accompaniment for the third system, including treble and bass staves. The treble staff features a melodic line with eighth notes. The bass staff features a steady eighth-note accompaniment.

Piano accompaniment for the final system, including treble and bass staves. The treble staff features a melodic line with eighth notes. The bass staff features a steady eighth-note accompaniment.