

WOMAN

WORDS & MUSIC BY JOHN LENNON

Moderately slow

Ebsus4

Eb

Ab/Eb

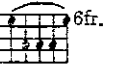
Eb

Ebsus4

Eb

Ab/Eb

Eb



Eb

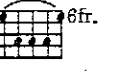
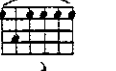
Fm7

Eb/G

Fm7

Eb

Cm



Wom-an,
Wom-an,

I can
I know you

hard-ly ex-press
un - der-stand

my mixed e - mo-tions at my
the lit - tle child in-

Fm

Bbsus4

Bb

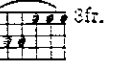
Ab

Fm7

Gm

Bbsus4

Bb



thought-less-ness.
side the man.

Af - ter all, I'm for - ev-er in your debt. And
Please re-mem - ber, my life is in your hands. And

Eb

Fm7

Eb/G

Fm7

Eb

Cm



wom-an,
wom-an,

I will try to ex - press
hold me close to your heart.

my in-ner feel-ings and
How-ev-er dis-tant, don't

Fm

Bbsus4

Bb

Ab

Fm7

Gm



4fr.

3fr.

thank-ful-ness_ keep us a-part...

for show-ing me the mean-ing of suc- Af-ter all, it is writ-ten in the

Bbsus4

Bb

Ebmaj9



cess. stars.

Ooh,

Cm7

Fm7

Bb6

Ebmaj9



3fr.

well, well.

Doo doo doo doo doo.

Ooh,

Cm7

Fm7

1. Bb6

2. Bb6



3fr.

well, well.

Doo doo doo doo doo.

doo doo.

E F#m7 E/G# F#m7

Wom-an, please let me ex - plain.

E C#m F#m Bsus4 B A F#m7

I nev-er meant to cause you sor-row or pain. So let me tell you a -

G#m Bsus4 B

gain and a - gain and a - gain: I

Repeat and fade Ema9 C#m7 F#m7 B6

love you, yeah, yeah, now and for - ev-er. I