

# BEAUTY AND THE BEAST

(From Walt Disney's "BEAUTY AND THE BEAST")

Lyrics by HOWARD ASHMAN  
Music by ALAN MENKEN

Moderately slow

F(add9)



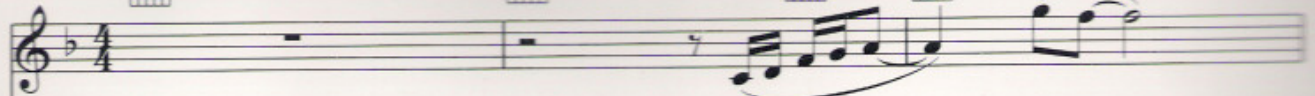
B $\flat$ /F



C/F



F(add9)



Female: Ooh. \_\_\_\_\_ Male: Ooh. \_\_\_\_\_



B $\flat$ /F



C/F



F(add9)



B $\flat$ /F



C/F



Female: Tale as old as \_\_\_\_\_ time, \_\_\_\_\_



F(add9)



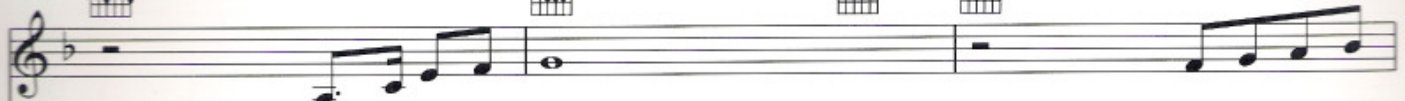
B $\flat$ /F



C/F



F(add9)



true as it can be.

Bare-ly e - ven



Am7                                      Bb(add9)                                      C7sus                                      C

friends,                      then some-bod - y                      bends                      un - ex - pect - ed - ly. —

D                                      G/D                                      A/D                                      D(add9)                                      D

Male: Just a — lit-tle change. —                                      Small, to — say the

Am7/D                                      D7                                      Gmaj7                                      D(add9)/F#                                      Em7                                      D/A                                      A7

least.                      Both a lit - tle scared,                      nei - ther one pre - pared.                      Both: Beau - ty and

D                                      F#m7

the — Beast.                      8va — — — — —                      Ev - er just the same.

G F#m7 G(add9)

Ev - er a sur - prise. Ev - er as be -

F#m7 Bm C

fore, and ev - er just as - sure - as the sun will rise.

G/A Asus A D(add9) G/D A/D D(add9)

Male: Whoa, oh, oh. Woo oh.

*cresc.*

Em/D F#7/A# Bm F#m7 G(add9)



Musical staff with treble clef, key signature of two sharps (F# and C#), and a melodic line.

Both: Ev - er just the same.

Male: Yeah, yeah.

Ev - er a sur -

Piano accompaniment for the first system, showing both treble and bass staves.



Musical staff with treble clef, key signature of two sharps, and a melodic line.

prise.

Both: Ev - er as be - fore,

Female: ev - er just - as

Piano accompaniment for the second system, including a triplet of eighth notes in the bass line.



Musical staff with treble clef, key signature of two sharps, and a melodic line.

sure — Both: as the sun will — rise.

Male: Oh, oh, oh.

Piano accompaniment for the third system, featuring a 3/4 time signature change and a 5/4 time signature change.



Musical staff with treble clef, key signature of two sharps, and a melodic line.

Female: Tale as old as — time,

tune as old —

Piano accompaniment for the fourth system, including a 4/4 time signature change.

C/G



D/G



G



G/D



B7#9



as song.

*Both:* Bit-ter sweet and strange,

find-ing you can

Em



C



Dsus



D



E(add9)



change,

learn-ing you were wrong.

*Male:* Cer-tain as the

A/E



B/E



E(add9)



Bm7



E7

*Female:* sun. (Cer-tain as the sun.)*Male:* ris-ing in the East.*Female:* Tale as old as

Amaj7



C#m



F#m7



E/B



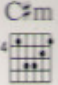
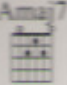
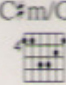
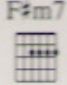
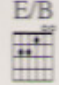
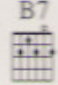
B7



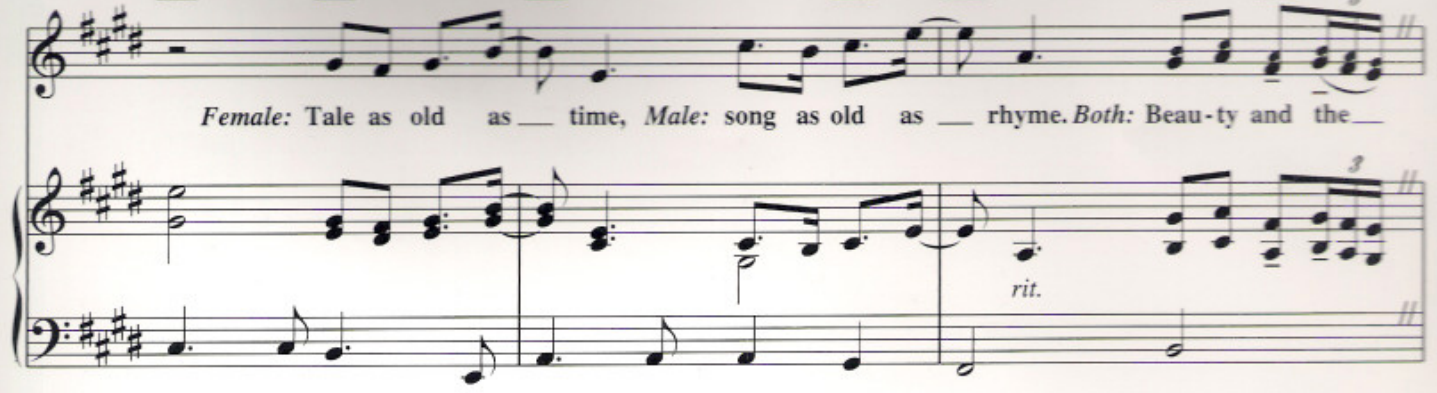
E

time, *Both:* song as old as rhyme.




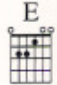
Beau-ty and the Beast.

C#m 
 E/B 
 Amaj7 
 C#m/G# 
 F#m7 
 E/B 
 B7 

Female: Tale as old as — time, Male: song as old as — rhyme. Both: Beau-ty and the —



*rit.*

E 
 A/E 
 B/E 
 E 

Beast.

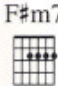

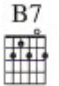
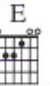


*mp*

A/E 
 B/E 
 Am/C 
 E/B 
 F#/A# 
 Am 
 E(add9)/G# 
 B/C# 
 C#7b9 



*rit.*

F#m7 
 E/B 
 B7 
 E 

Beau-ty and the Beast.



*rit.*