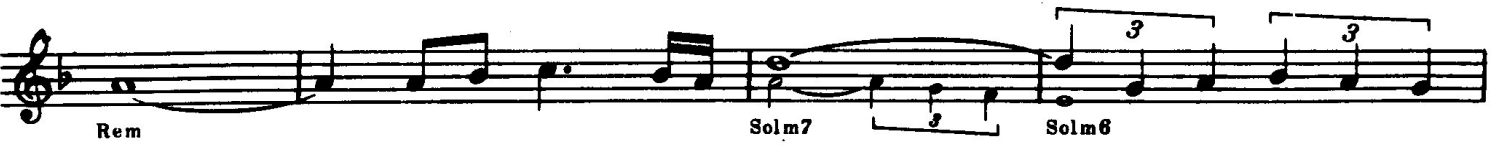
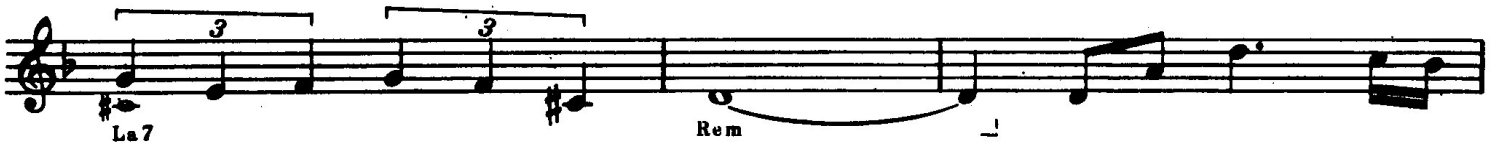
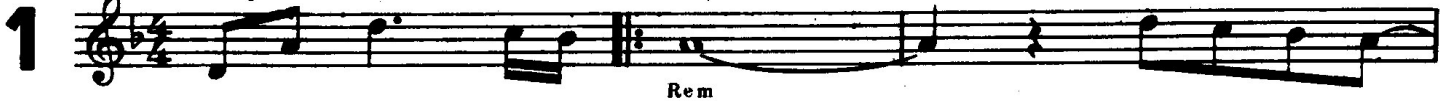


FLOR D'LUNA

(MOONFLOWER)

Musica di T. COSTER

Poco mosso



Solm7 Do 9/5- Fa maj7

Fa 6 Mim7 La La7 Rem

Solm7 Do 9/5-

Fa maj7 Fa 6 Mim7 La

La7 Rem

Rem Solm7 La

La7 Rem Solm7

Solm6 Rem La7

1. Rem 2. Rem