

BLACK OR WHITE

Written and Composed by
MICHAEL JACKSON

Brightly

mf

E A/E E A6 E A/E E A6 E

A/E E A6 E A/E E A6 E

E A/E E A6 E

I took my ba - by on a Sat - ur - day bang. —
They print my mes - sage in the Sat - ur - day Sun. —

Boy, is that girl with you? Yes, we're one and the same. — Now,
I had to tell them I ain't sec - ond to none. — And I

A

I be - lieve_ in mir - a - cles and a mir - a - cle has hap - pened to - night..
 told a - bout e - qual - i - ty, and it's true, ei - ther you're wrong or you're right..
 tell me you_ a - gree_ with me when I saw you kick - ing dirt in my eye_

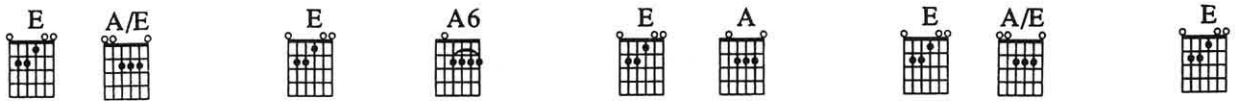
E A/E E A6 E B

But_ if you're think - in' a - bout_ my ba - by, it don't

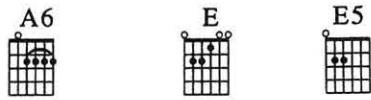
A To Coda E A/E E A6 E

mat - ter if you're black or white_

E A/E E 1. A6 E 2. A6 E A



Musical notation for the first system, including a treble clef staff with a whole rest and a grand staff with piano accompaniment.



Musical notation for the second system, including a treble clef staff with lyrics and a grand staff with piano accompaniment.

I am tired of this dev - il, I am tired of this stuff.

Musical notation for the third system, including a treble clef staff with lyrics and a grand staff with piano accompaniment.

I am tired of this bus - iness, sew when the go - ing gets rough.



Musical notation for the fourth system, including a treble clef staff with lyrics and a grand staff with piano accompaniment.

I ain't scared of your broth - er, I ain't scared of no sheets.

E5



E7+9



E5



I ain't scared of no - bod - y, girl, when the go-in' gets mean.

No Chord

Em6



A6



Pro - tec - tion for gangs, clubs, and na - tions,

Em6



A6



Em6



A6



caus - ing grief in hu - man re - la - tions. It's a turf war, on a glo - bal scale,

Em6



A6



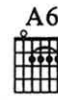
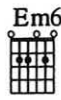
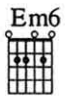
Em6



A6



I'd rath - er hear both sides of the tale. You see, it's not a - bout rac - es, just plac - es,



fac - es. Where your blood comes from is where your space is. I've seen the sharp get dull - er, I'm



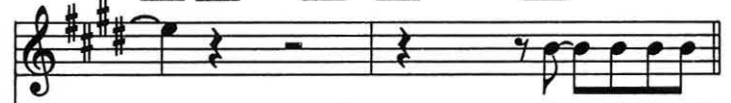
N.C.

D.S. *al Coda*

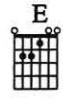
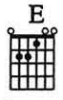
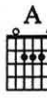
Coda



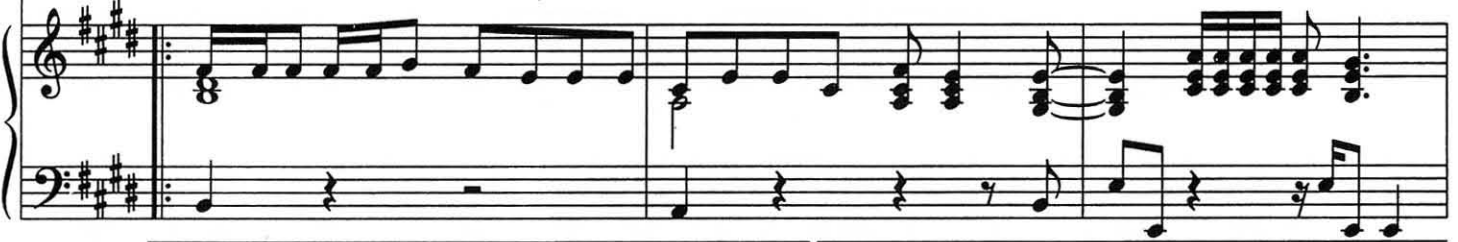
not go-ing to spend my life be-ing a col-or. Don't



I__ said if you're



think - in' of be - ing my { ba - by, } it don't mat - ter if you're black or white. __
broth - er, }



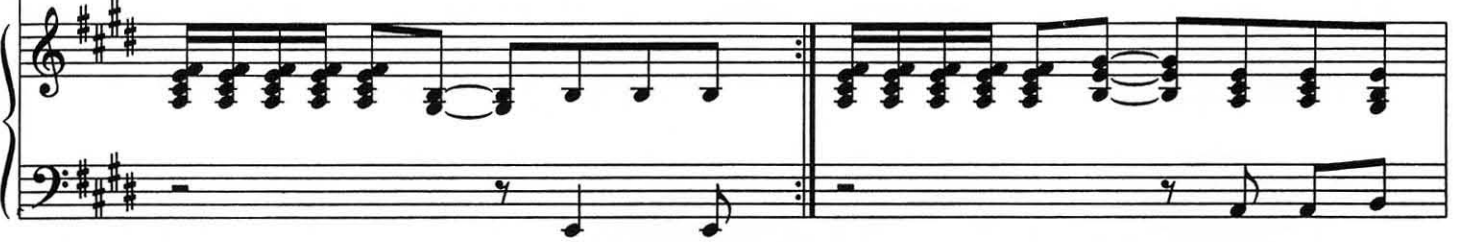
1.

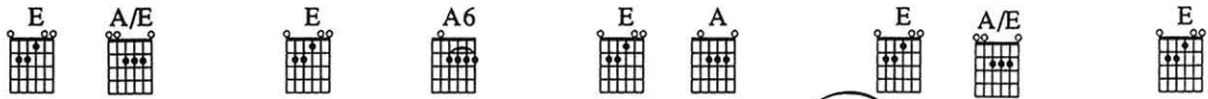


2.

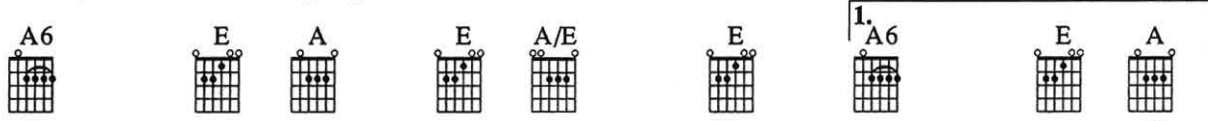


I__ said if you're

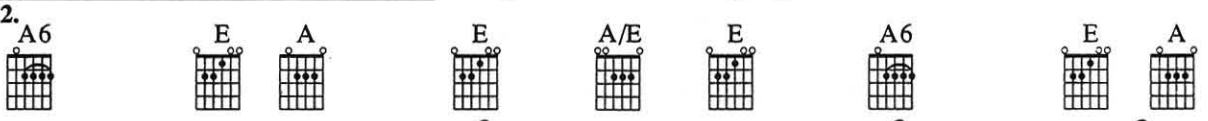




Ooh, ooh, —



yea, yea, yea — now. Ooh, ooh, —



It's black, it's white, it's tough for them to get by. It's



black, it's white, whoo. It's