

PIANO MAN

Words and Music by
Billy Joel

Moderately

mf

First system of piano introduction, featuring a treble and bass clef staff with a 3/4 time signature. The music begins with a mezzo-forte (mf) dynamic. The treble staff contains a series of chords and eighth notes, while the bass staff provides a steady accompaniment.

Second system of piano introduction, continuing the melodic and harmonic development from the first system.

1st time, directly to verse

Last time, Fine

slower

Third system of piano introduction, including performance directions for the first and last times.

C

Em/B bass

Am

C/G bass

Four guitar chord diagrams are provided: C major, Em/B bass, A minor, and C/G bass.

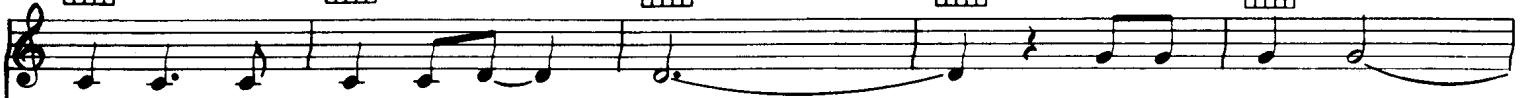
1. It's nine o'clock on a Sat-ur-day, The
(2. Now) John at the bar is a friend of mine, He
(3. Now) Paul is a real-es-tate nov-el-ist, Who
(4. It's a) pret-ty good crowd for a Sat-ur-day, And the

mp

Fourth system of piano introduction, concluding the piece with a mezzo-piano (mp) dynamic.



C/E bass



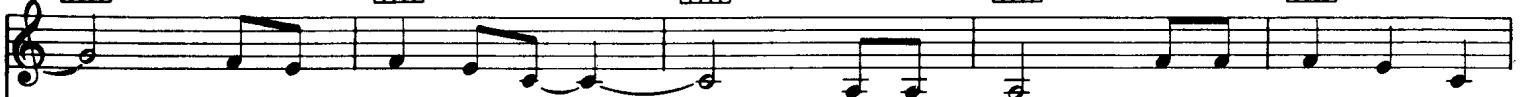
reg - u - lar crowd shuf - fles in _____ There's an old man _____
 gets me my drinks for _____ free, _____ And he's quick with a _____
 nev - er had time for a _____ wife _____ And he's talk - in' with _____
 man - ag - er gives me a _____ smile _____ 'Cause he knows that it's _____



Em/B bass



C/G bass



_____ sit - ting next to me _____ Mak - in' love to his ton - ic and _____
 joke or to light up your smoke But there's some - place that he'd rath - er _____
 Dav - y who's still in the Nav - y And prob - ab - ly will be for _____
 me they've been com - in' to see To for - get a - bout life for a _____



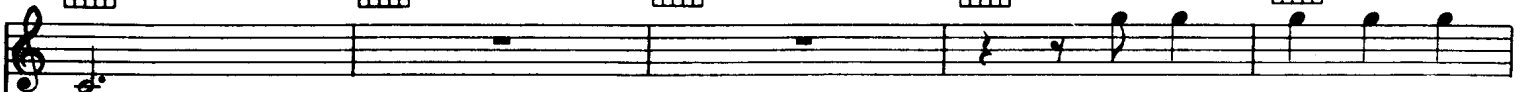
F/C bass



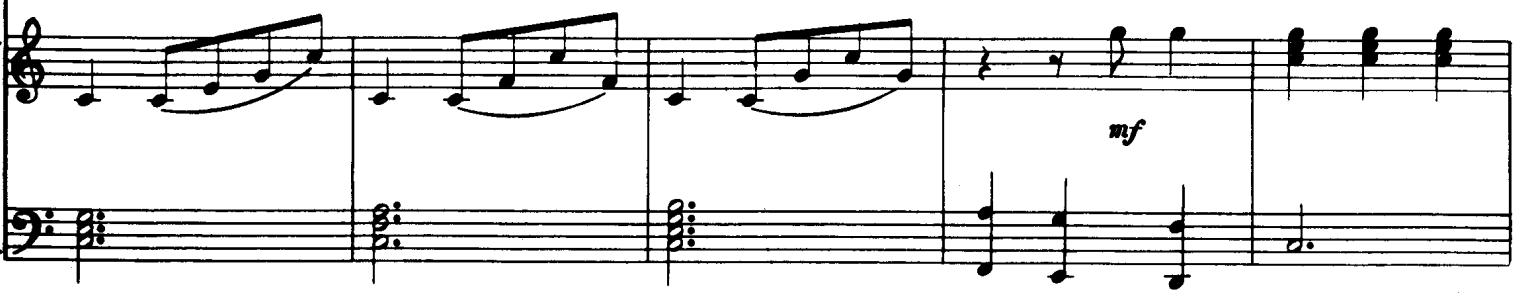
Cmaj7



G11



gin. He says, "Son, can you _____
 be. He says, "Bill, I be - _____
 life. And the wait - ress is _____
 while. And the pia - no _____



mf

Em/B bass



Am



C/G bass



C/E bass



play me a mem - o - ry? I'm not real - ly sure how it
 lieve this is kill - ing me," As a smile ran a - way from his
 prac - tic - ing pol - i - tics, As the bus - 'ness - men slow - ly get
 sounds like a car - ni - val And the mic - ro - phone smells like a

D7



G



C



Em/B bass



Am



goes, _____ But it's sad and it's sweet and I knew it com -
 face _____ "Well, I'm sure that I could be a mov - ie
 stoned _____ Yes, they're shar - ing a drink they call lone - li -
 beer _____ And they sit at the bar and put bread in my

C/G bass



F



G11



C



plete When I wore a young - er man's clothes."
 star If I could get out of this place."
 ness But it's bet - ter than drink - in' a lone.
 jar And say "Man, what are you do - in' here?"

Am

Am/G bass

D7/F# bass



Am



Da da da de de da da da
Da da da de de da da da
da da

Instrumental

Da da da de de da da da



Am/G bass

D7/F# bass

D7

G

G/F bass



de de da da da
de de da da da
de de da da da



C/E bass

G7/D bass

C

Em/B bass

Am



Sing us a song, you're the pia - no man



C/G bass



F



C/E bass



D7



Sing us a song to - night.

G



C



Em/B bass



Am



Well, we're all in the mood for a mel - o - dy.

C/G bass



F



G11



C



And you've got us feel - in' al - right.

F/C bass



Cmaj7



1. 2. 3.



4.



D. C. al Fine

- 2. Now
- 3. Now
- 4. It's a