

The First Cut Is The Deepest

Words & Music by Cat Stevens

Slowly, with a beat



Piano accompaniment for the first system, consisting of a grand staff with treble and bass clefs. The music is in 4/4 time and features a simple, arpeggiated melody in the right hand and a steady bass line in the left hand.



1. I would have giv - en you all of my heart, but there's
want you by my side just to

Vocal line and piano accompaniment for the second system. The vocal line is written in a single treble clef staff, and the piano accompaniment is in a grand staff. The lyrics are aligned with the notes.

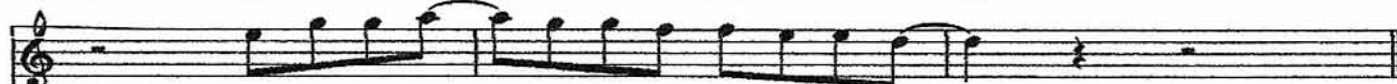


some - one who's torn it a - part. And she's
help me dry the tears that I've cried. And I'm

Vocal line and piano accompaniment for the third system. The vocal line is written in a single treble clef staff, and the piano accompaniment is in a grand staff. The lyrics are aligned with the notes.



tak - en just all that I had, but if you want, I'll try to love a - gain.
 sure gon - na give you a try, and if you want, I'll try to love a - gain.



Ba - by, I'll try to love a - gain but I know.
 Ba - by, I'll try to love a - gain but I know.



The first cut is the deep - est; ba - by, I know the first cut is the deep -



F G C G F G

- est. When it comes to be - in' luck - y she's cursed;— when it

I. C F G

comes to lov - in' me she's worse.—

2. C G

2. I still comes to lov - in' me she's worse.—

F G C F G

Repeat and Fade