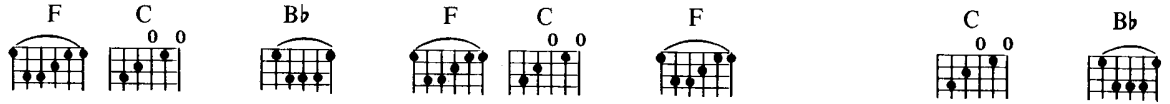


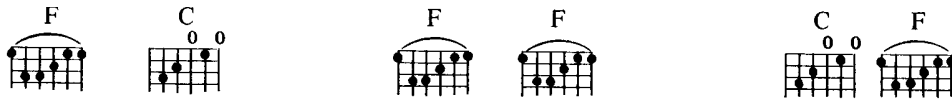
YOU CAN CALL ME AL

Words and Music By
PAUL SIMON

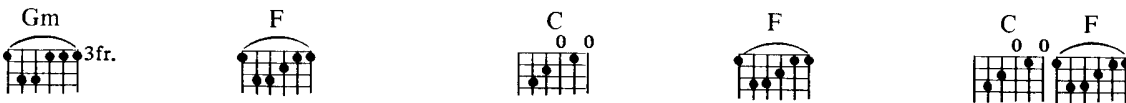
Moderately



mf



A man— walks down the street,— he says,
A man— walks down the street,— he says,
A man— walks down the street,— It's a



“Why am I soft in the mid-dle now? Why am I soft in the mid-dle, the
“Why am I short of at-ten-tion? Got a short lit - tle span of at - ten-tion and
street in a strange world. May - be it's the third world,

Gm 3fr. F C F C F

rest of my life is so hard. I need a pho-to op-por-tun-i-ty,
 oh, my nights are so long. Where's my wife and fam-i-ly?
 may-be his first time a-round. Does-n't speak the lan-guage. He

Gm 3fr. F C F C F

I want a shot at re-demp-tion. Don't want to end up a car-toon in a
 What if I die here? Who'll be my role mod-el
 holds no cur-ren-cy. He is a for-eign man.

Gm 3fr. F C F

car-toon— grave-yard." Bone dig-ger, bone dig-ger,
 now that my role mod-el is gone, gone? He
 He is sur-round-ed by the sound, the sound;

Gm C F Gm C

dogs in the moon - light_ far a - way in my well - lit door.. Mis - ter
 ducked back down the al - ley with some ro - ly po - ly lit - tle bat - faced girl.. All a -
 cat - tle in the mar - ket place, — scat - ter - ings and or - phan - ag - es. He looks a -

F Gm C F

beer bel - ly, beer bel - ly, get these mutts a - way from me. — I don't find this stuff a -
 long, a - long, there were in - ci - dents and ac - ci - dents. There are hints and al - le -
 round, a - round. He sees an - gels in the arch - i - tec - ture — spin - ning in in - fin - i - ty. He says

Gm C F C Bb F C F

mus - ing an - y - more.
 ga - tions. } If you'll be my bod - y - guard_ I can be your long_ lost_
 a - men and hal - le - lu - jah.)

C ^{0 0} Bb F C ^{0 0} F C ^{0 0} Bb

— pal. I can call you Bet - ty and

To Coda

1. F C ^{0 0} F C ^{0 0} Bb F C ^{0 0} F

Bet - ty, when you call me, you can call me Al.

2.

F C ^{0 0} Bb F C ^{0 0} F

Tacet

call me Al. Call me Al.

D.C. al Coda

Coda

F C Bb F C F

call me Al. Call me.

Detailed description: This system contains the first six measures of the piece. It features a vocal line with lyrics 'call me Al. Call me.' and a piano accompaniment. Above the vocal line, guitar chords are indicated: F, C (with two 0s), Bb, F, C (with two 0s), and F. The piano part consists of chords in the right hand and a melodic line in the left hand.

F C F Gm F C F C F

Na na na na na na na. Na na na na

Detailed description: This system contains the next six measures. The vocal line has lyrics 'Na na na na na na na. Na na na na'. The piano accompaniment continues with chords and a melodic line. Guitar chords are indicated above the vocal line: F, C (with two 0s), F, Gm, F, C (with two 0s), F, C (with two 0s), and F.

Gm F C F F Gm C

Na na na na. Hm, hm,

Detailed description: This system contains the next six measures. The vocal line has lyrics 'Na na na na. Hm, hm,'. The piano accompaniment continues. Guitar chords are indicated above the vocal line: Gm (with 3fr.), F, C (with two 0s), F, F, Gm (with 3fr.), and C (with two 0s).

F 1. Gm C 2. Gm C F

hm hm.

Detailed description: This system contains the final six measures. The vocal line has lyrics 'hm hm.'. The piano accompaniment concludes the piece. Guitar chords are indicated above the vocal line: F, 1. Gm (with 3fr.), C (with two 0s), 2. Gm (with 3fr.), C (with two 0s), and F.

Tacet

The first system consists of a treble clef staff with a whole rest, indicating a tacet for the vocal line. Below it is a grand staff (treble and bass clefs) with a piano introduction. The bass line starts with a quarter rest followed by a series of eighth and sixteenth notes, while the treble line has chords and moving lines.

F C Bb F C F C Bb

A row of eight guitar chord diagrams corresponding to the chords listed above: F major, C major, Bb major, F major, C major, F major, C major, and Bb major. Each diagram shows the fretting pattern on a six-string guitar.

The second system begins with a treble clef staff containing a repeat sign. Below it is a grand staff with piano accompaniment. The piano part features a steady bass line and chords in the treble clef.

Repeat and fade

F C F C Bb

A row of five guitar chord diagrams corresponding to the chords listed above: F major, C major, F major, C major, and Bb major.

The third system features a vocal line with lyrics and a piano accompaniment. The lyrics are: "If you'll be my bod - y - guard. I can call you Bet - ty." The piano part continues with the same accompaniment as the previous system.

F C F F C Bb F C F

A row of nine guitar chord diagrams corresponding to the chords listed above: F major, C major, F major, F major, C major, Bb major, F major, C major, and F major.

The fourth system shows the final part of the piano accompaniment, ending with a double bar line and repeat dots. The piano part continues with the same accompaniment as the previous system.