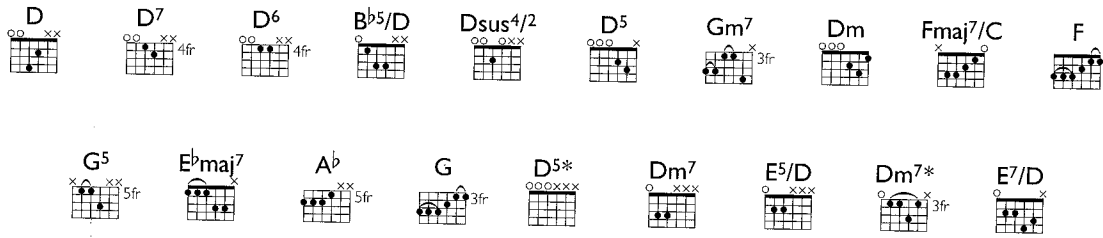


# BODYSNATCHERS

Words and Music by Thomas Yorke, Jonathan Greenwood,  
Colin Greenwood, Edward O'Brien and Philip Selway



Tune all guitars ⑥ = D (lowest string)

♩ = 168

**D**  
Elec. Gtr. I

w/ heavy dist. Fig. I simile

**TAB**

simile

6

**D6** **D**

I. I do not

Fig. I

**TAB**



**Elec. Gtrs. 2 & 3 (1° only)**

w/ dist.

10 D7

un - der - stand — what it is —  
 removed back - bone, — a pale im - i -

**Elec. Gtr. 2 (on %)**

w/ dist.

Fig. 2

Elec. Gtr. 1 plays Fig. 1 cont. sim.

cont. sim.

TAB

**Elec. Gtr. 3 (on %)**

w/ dist.

TAB

14 D6

-ta - tion I've — done — wrong —  
 with the ed - ges

**Elec. Gtr. 3 (on %)**

Elec. Gtr. 2 plays Fig. 2 (on % only)

TAB

17 D

Full of holes, check for pulse,  
sawn off.

TAB: 12 14 12 14 12

Play 1° only

21 D7 D6 D

blink your eyes, one for yes, two for no.

**Elec. Gtrs. 2 & 3**

TAB: (Chords indicated by 'x' marks)

Elec. Gtr. 2

26 D7

**Elec. Gtr. 1** **Elec. Gtr. 2**

*Elec. Gtr. 1 cont. sim.*

TAB: 12-11 12-10-12 10-12 0-7-9-5 0-5-5 0-10-12 10-12-15-17 17-0-0

Elec. Gtr. 3

TAB: (Chords indicated by 'x' marks) 9 10 10

30 D<sup>6</sup> D

I've no idea what { I am } you are } talk -

Elec. Gtr. 2

Elec. Gtr. 1 plays Fig. 1 cont. sim.

TAB

Elec. Gtr. 3

TAB

34 D<sup>7</sup>

ing a - bout, \_\_\_\_\_

TAB

TAB

38

D<sup>6</sup> D

I'm trapped in this body and can't get  
 Your mouth moves on - ly with some - one's hand up your

TAB

10 12 10 12 10 12 x 11 12 12 10 12 10 12 x 11 12 14

TAB

10 12 10 12 10 12 x 9 10 9 10 12 10 12 10 12 x 9 10 12

B<sup>b5</sup>/D

out. }  
 ass. }

Oh, oh, oh,...

Elec. Gtrs. 1 & 2

TAB

10 12 10 12 12 11 11 x 11 12 14 10 12 10 12 10 12 12 x 9 10 12

TAB

10 12 10 12 10 12 12 x 9 10 12 10 12 10 12 10 12 12 x 7 8 10

To Coda

Elec. Gtr. 3

7 (e) 17fr  
 ② hold bend  
 B<sup>b5</sup>/D

Dsus<sup>4</sup>/2

46

oh,

Elec. Gtr. 1

TAB

Elec. Gtr. 2

TAB

1. 2.

15fr ② D<sup>5</sup> 15fr ② Dsus<sup>4</sup>/2 D<sup>5</sup>

D. al Coda


50

oh, oh, oh, 2. You killed the sound

TAB

TAB

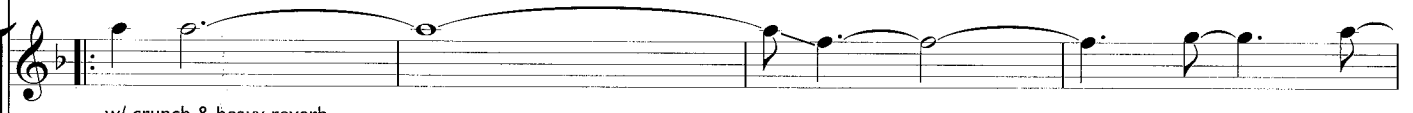
**Ac. Gtr.**  
**Gm7** **Dm**

♠ **Coda**  cont. sim.

54 (Sing small notes 2° only)

— gone out\_ for you?\_ Be-cause the light's gone out\_ for me.\_ It is the


**Elec. Gtr. 3**  
 w/ crunch & heavy reverb



**TAB**

14	14	(14) 10	12	14
----	----	---------	----	----

**Elec. Gtr. 2**  
 (Play small notes 2° only)  
 w/ crunch & heavy reverb



**TAB**

(7)	(7) 10	(10) 12
-----	--------	---------

58 **Fmaj7/C** **Gm7**

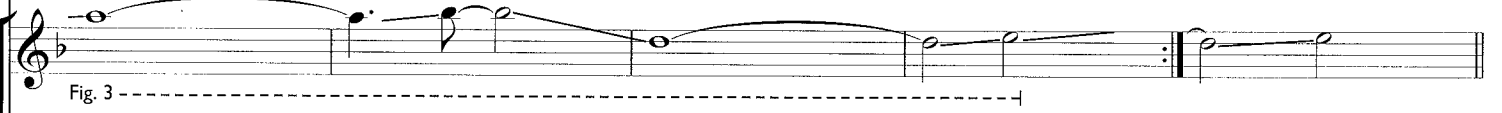
twen-ty-first cen-tur-y, it is the twen-ty-first cen-tur-y. Has the light It can fol-



**TAB**

(14) 15	(15) 10	
---------	---------	--

**Elec. Gtr. 2**  
 Fig. 3



**TAB**

14	(14) 15	7	(7) 9	(7) 9
----	---------	---	-------	-------

63 Gm7 Dm

- low you like a dog, it brought me to my knees, they got a

**Elec. Gtr. 3**

Ac. Gtr. cont. sim.  
Elec. Gtr. 2 plays Fig. 3 ad lib.

TAB

-14	(14) 12	10	(10) 12
-----	---------	----	---------

67 Fmaj7/C Gm7

skin and they put me in, they got a skin and they put me in. On the lines

TAB

-14	(14) 17	12	(12)
-----	---------	----	------

**Elec. Gtr. 2**

12fr 10fr 10fr 10fr


71 Gm7 Dm

wrapped round my face, on the lines wrapped round my face are for

TAB

-14	(14) 12	10	(10) 12
-----	---------	----	---------



10fr (4) ————— 15fr (3) ————— 12fr (4)  10fr (3) 7

75 **Fmaj7/C** **Gm7**


an - y - one else to see, — are for an - y - one else to see — I'm a lie. —

**Elec. Gtr. 2**

TAB: -14 (14) 19 15 (15) 10 10

*full*

**G**  
**Elec. Gtr. 1**




79 **F** **Gm** **E♭maj7** **F** **Gm**

*cont. sim.*

TAB: 10 10 10 12 12 12 12 8 8 8 8 10 10 10 10 12

*full* *1/2* *1/2* *full* *full* *full* *full* *1/2*

**E♭maj7** **A♭** **G**



83

TAB: 12 12 12 8 8 8 8 13 13 13 13 5 5

*1/2* *full* *full* *full* *full*



86

Musical staff with a treble clef, a key signature of one flat, and a melodic line starting with a quarter rest followed by a half note and a quarter note, all under a slur.

Yeah.....

Musical staff with a treble clef, a key signature of one flat, and a rhythmic accompaniment consisting of eighth notes and chords.

Tablature staff (TAB) with fret numbers (5, 7, 8) and vertical lines indicating string positions.

D5\*

90

Dm7

Musical staff with a treble clef, a key signature of one flat, and a melodic line starting with a quarter note followed by a quarter rest.

Elec. Gtr. 2

Musical staff with a treble clef, a key signature of one flat, and a rhythmic accompaniment consisting of eighth notes.

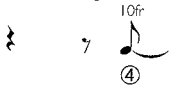
Tablature staff (TAB) with fret numbers (0, 3, 2, 0) and vertical lines indicating string positions.

Elec. Gtr. 1

Musical staff with a treble clef, a key signature of one flat, and a melodic line consisting of sustained chords.

Tablature staff (TAB) with fret numbers (0, 3, 3, 0) and vertical lines indicating string positions.

Elec. Org. arr. Gtr.



94

E5/D

D5\*

Vocals ad lib.

Elec. Gtr. 2 & Bass

Elec. Gtr. I

Dm7\*  
cont. sim.

Elec. Org. arr. Gtr.

12fr

10fr

98

Elec. Gtr. 2 & Bass

Elec. Gtr. I

102

E7/D

D5\*

Vocals ad lib.

w/ heavy dist. & wah

Tablature (Upper):

```

T A B
0 3 0 3 2 0 | 0 3 0 3 2 0 | 0 3 0 3 2 0 | X 12-10 0 0
  
```

Tablature (Lower):

```

T 3 3 3 3 | 3 3 3 3 | 3 3 3 3 | 3 3 3 3 | 3 3 3 3 | 3 3 3 3 | 3 3 3 3
A 5 5 5 5 | 5 5 5 5 | 5 5 4 4 | 4 4 4 4 | 4 4 4 4 | 4 4 4 4 | 4 4 4 4
B 3 3 3 3 | 3 3 3 3 | 3 3 2 2 | 2 2 2 2 | 2 2 2 2 | 2 2 2 2 | 2 2 2 0
  0 0 0 0 | 0 0 0 0 | 0 0 0 0 | 0 0 0 0 | 0 0 0 0 | 0 0 0 0 | 0 0 0 0
  
```

106

Elec. Gtr. 2

Elec. Gtr. 1

w/ heavy dist. & wah

hold bend

1/2

cont. sim.

Tablature (Top):

```

T 0 0 0 0 | 10-14-12 0 | 0 0 0 10-10-12 0 | 0 0 0 10 12-10 0 | 0 0 0 10-14-12 10
A 0 0 0 0 | 0 0 0 0 | 0 0 0 0 | 0 0 0 0 | 0 0 0 0
B 0 0 0 0 | 0 0 0 0 | 0 0 0 0 | 0 0 0 0 | 0 0 0 0
  
```

Tablature (Bottom):

```

T 0 0 0 0 | 0 0 | 0 0 0 0 | 4 5
A 0 0 0 0 | 0 0 | 0 0 0 0 | 4 5
B 0 0 0 0 | 0 0 | 0 0 0 0 | 4 5
  
```

110

Vocals ad lib.

TAB notation for guitar: 10 10 10 10 12 0 | 0 0 0 12-10 | 0 0 0 14 12 0 | 0 0 13-13 12

TAB notation for bass: 5 5 5 5 5 5 | 5 5 5 5 5 4 | 4 4 4 4 4 4 | 4

114

Elec. Gtr. 2

Elec. Gtr. 1 cont. sim. ad lib. w/ noise until end

TAB notation for guitar: 13 13 | 12-10 | 13-13-15 | 15-13

118

I've seen it coming, I've seen it com - ing, I've seen it com - ing, I've seen it com - ing.

TAB notation for guitar: 12-10 | 13-15 | 11 X | 10 | 7 7 7 7 7 | 7 X