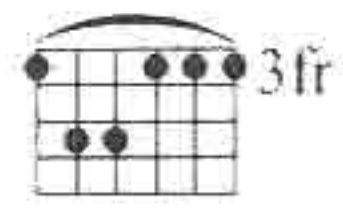


# TALK

Words & Music by Guy Berryman, Jon Buckland, Will Champion,  
Chris Martin, Karl Bartos, Ralf Huetter & Emil Schult

♩ = 120

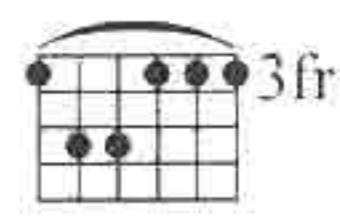
Gm



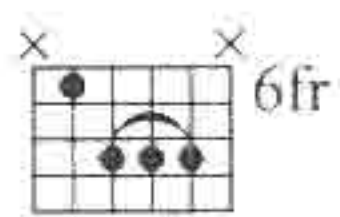
F



Gm



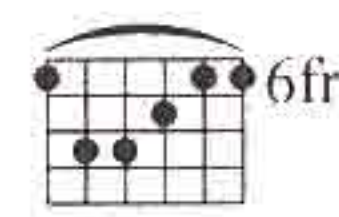
E<sup>b</sup>



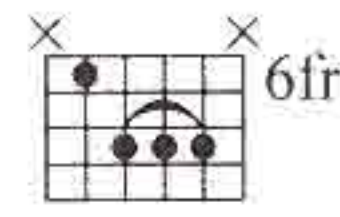
Gm



B<sup>b</sup>



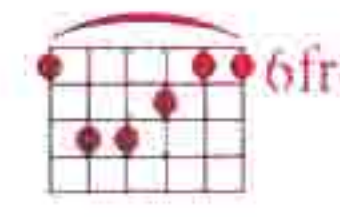
E<sup>b</sup>



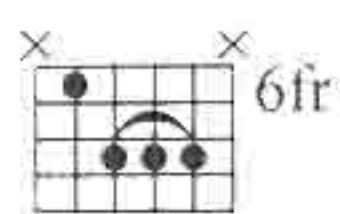
Gm



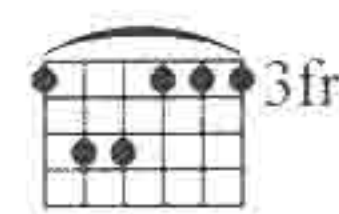
B<sup>b</sup>



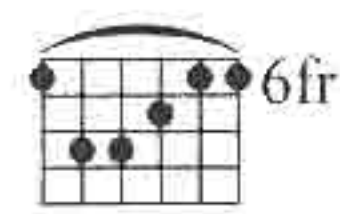
E<sup>b</sup>



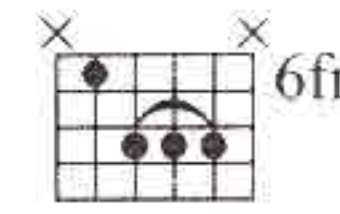
Gm



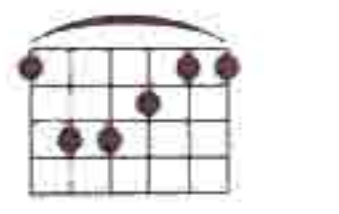
B<sup>b</sup>



E<sup>b</sup>



F





E<sup>b</sup> Gm B<sup>b</sup> E<sup>b</sup> Gm B<sup>b</sup>

I. Oh, bro-ther I can't, I can't get through. I've been

E<sup>b</sup> Gm B<sup>b</sup> E<sup>b</sup> F

try-ing hard to reach you 'cause I don't know what to do.

E<sup>b</sup> Gm B<sup>b</sup> E<sup>b</sup> Gm B<sup>b</sup>

Oh, bro-ther I can't be-lieve it's true. I'm so

E<sup>b</sup> Gm B<sup>b</sup> E<sup>b</sup> F

scared a-bout the fu - ture and I want to talk to you. Oh, I want



E<sup>b</sup> F Gm

to talk to you.

E<sup>b</sup>

You could take a pic - ture of  
(3°) don't know where you're go - ing and you

8<sup>vb</sup>

Gm<sup>7</sup> B<sup>b</sup> E<sup>b</sup> Gm<sup>7</sup> B<sup>b</sup>

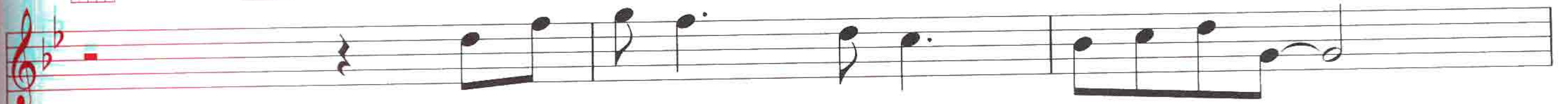
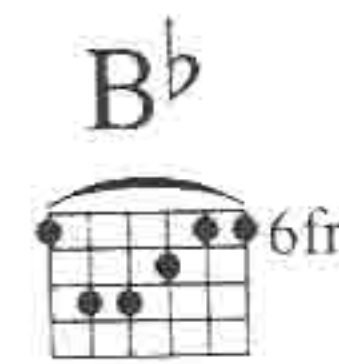
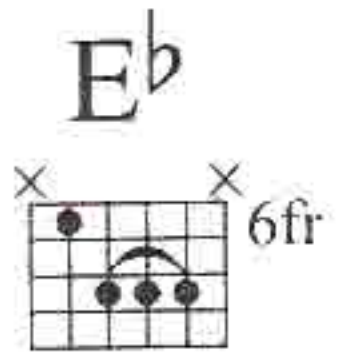
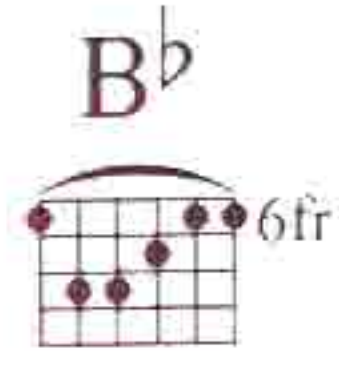
some-thing you see. —  
want to talk. —

You

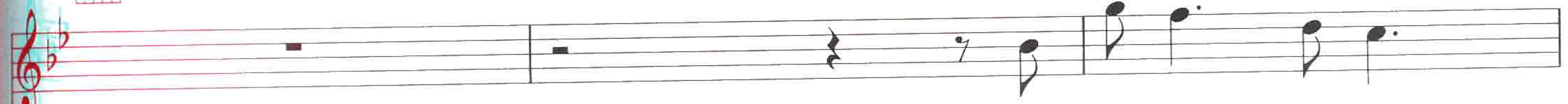
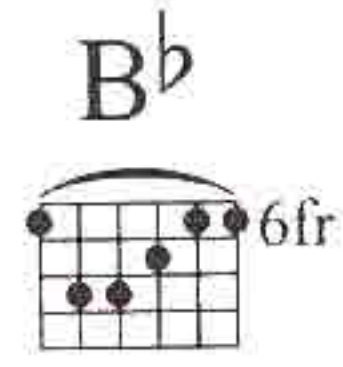
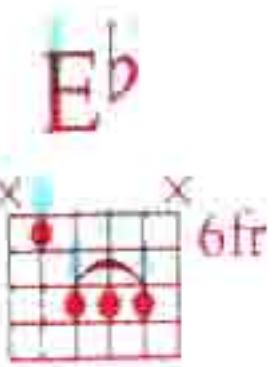
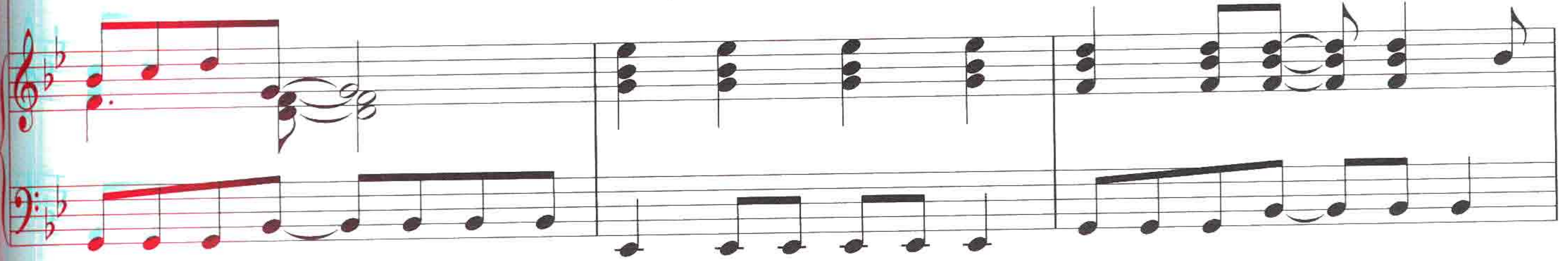
E<sup>b</sup> Gm<sup>7</sup> B<sup>b</sup> E<sup>b</sup>

In the fu - ture where will I be? —  
feel like you're go - ing where you've been be - fore. —

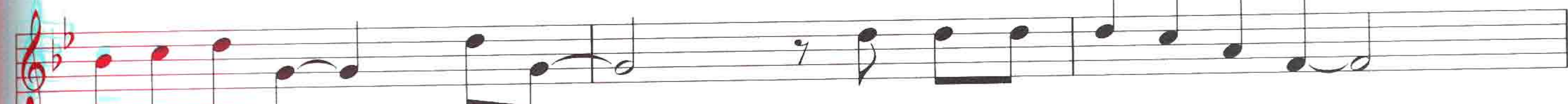
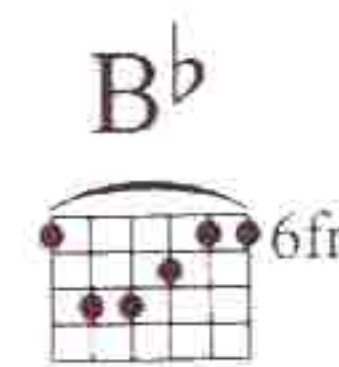
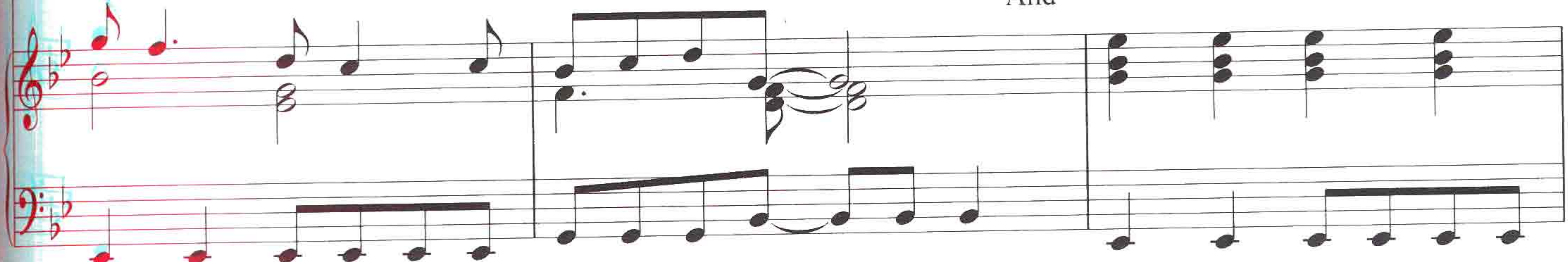




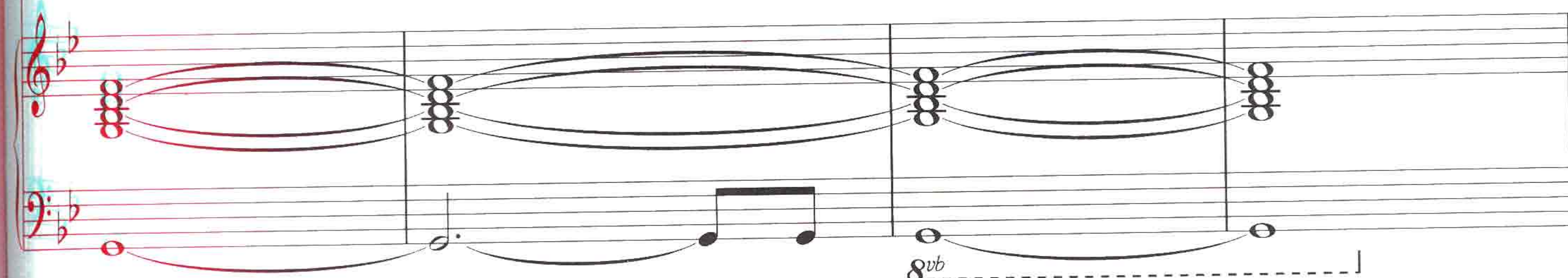
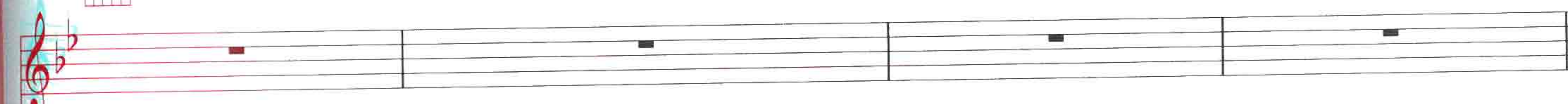
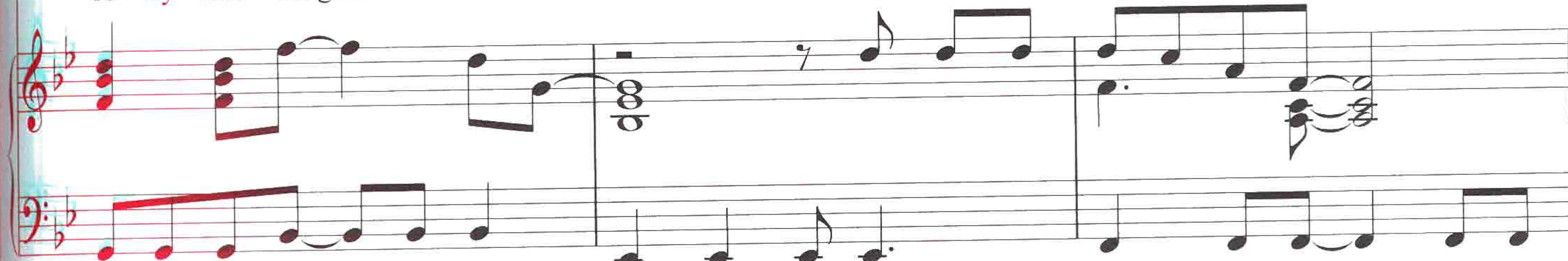
You could climb a ladder up to the sun  
You'll tell a-ny-one who'll lis-ten but you feel ig - nored.



or write a song no -  
And



-bo - dy had sung or do some-thing that's nev - er been done.





E<sup>b</sup> Gm B<sup>b</sup> E<sup>b</sup> Gm B<sup>b</sup>

2. Are you lost or in - com - plete? Do you

Detailed description: This system contains the first two lines of music. The top line is a vocal melody in G minor with lyrics "2. Are you lost or in - com - plete? Do you". Above the staff are guitar chord diagrams for E<sup>b</sup> (6fr), Gm (3fr), B<sup>b</sup> (6fr), E<sup>b</sup> (6fr), Gm (3fr), and B<sup>b</sup> (6fr). The bottom two staves show a piano accompaniment with block chords in the right hand and a simple bass line in the left hand.

E<sup>b</sup> Gm B<sup>b</sup> E<sup>b</sup> F

feel like a puz - zle, you can't find your miss - ing piece. Tell me

Detailed description: This system contains the second two lines of music. The top line is a vocal melody with lyrics "feel like a puz - zle, you can't find your miss - ing piece. Tell me". Above the staff are guitar chord diagrams for E<sup>b</sup> (6fr), Gm (3fr), B<sup>b</sup> (6fr), E<sup>b</sup> (6fr), and F. The piano accompaniment continues with block chords and a bass line.

E<sup>b</sup> Gm B<sup>b</sup> E<sup>b</sup> Gm B<sup>b</sup>

how you feel. Well, I

Detailed description: This system contains the third two lines of music. The top line is a vocal melody with lyrics "how you feel. Well, I". Above the staff are guitar chord diagrams for E<sup>b</sup> (6fr), Gm (3fr), B<sup>b</sup> (6fr), E<sup>b</sup> (6fr), Gm (3fr), and B<sup>b</sup> (6fr). The piano accompaniment continues with block chords and a bass line.

E<sup>b</sup> Gm B<sup>b</sup> E<sup>b</sup>

feel like they're talk - ing in a lan - guage I don't speak.

Detailed description: This system contains the final two lines of music. The top line is a vocal melody with lyrics "feel like they're talk - ing in a lan - guage I don't speak.". Above the staff are guitar chord diagrams for E<sup>b</sup> (6fr), Gm (3fr), B<sup>b</sup> (6fr), and E<sup>b</sup> (6fr). The piano accompaniment continues with block chords and a bass line.



F Eb F

And they're talk - ing it\_\_\_ to me,\_\_\_

Gm

*D.S. al Coda*

So you

8<sup>vb</sup>

⊕ Coda I

Eb F

some - thing that's nev - er been done. Do\_\_\_

Eb F Gm<sup>7</sup>

some-thing that's nev - er been done. \_\_\_



Cm  
x 3fr

E<sup>b</sup>  
x 6fr

Gm<sup>7</sup>  
x 3fr

8vb

F  
x 3fr

Cm  
x 3fr

E<sup>b</sup>  
x 6fr

Gm<sup>7</sup>  
x 3fr

F  
x 3fr

8vb

Cm  
x 3fr

E<sup>b</sup>  
x 6fr

Gm<sup>7</sup>  
x 3fr

F  
x 3fr

8vb

Cm  
x 3fr

E<sup>b</sup>  
x 6fr

Gm<sup>7</sup>  
x 3fr

F  
x 3fr

8vb



E<sup>b</sup>  
x x x x x x 6fr

Gm<sup>7</sup>  
x x x x x 3fr

B<sup>b</sup>  
x x x x x 6fr

Play 3 times E<sup>b</sup>  
x x x x x x 6fr

⊕ Coda II

F  
x x x x x 6fr

*D.S. al Coda II*

So you

E<sup>b</sup>  
x x x x x x 6fr

no - thing's real - ly mak - ing a - ny

Gm<sup>7</sup> B<sup>b</sup> E<sup>b</sup> F

sense at all. Let's talk, let's talk. Let's

E<sup>b</sup>maj<sup>7</sup> F Gm

talk, let's talk.