

(Everything I Do)

I DO IT FOR YOU

from the Motion Picture ROBIN HOOD: PRINCE OF THIEVES

Words and Music by BRYAN ADAMS,
ROBERT JOHN LANGE and MICHAEL KAMEN

Slowly

Chords: Db, Absus/Db, Gb/Db

mp

Chords: Absus/Db, Db

Look in - to my eyes, _____
Look in - to your heart, _____

Chords: Dbsus2, Ab/Db, Gb, Absus, Ab

you will see _____ what you mean to _____ me. Search your
you will find _____ there's noth - ing there to _____ hide. Take me as I

Chords: Db, Dbsus2, Ab/Db

heart, _____ search your soul, _____ and when you
am, _____ take my life, _____ I would



find me there you'll search no more. Don't tell me it's not worth fight - ing
 give it all I would sac - ri - fice. Don't tell me it's not worth fight - ing



for. You can't tell me, it's not worth dy - ing
 for. I can't help it, there's noth - ing I want



for. } You know it's true, ev - 'ry - thing I
 more. }



do, I do it for you.

Db 4fr

Dbsus 4fr

Db 4fr

Cb x

— you. There's no love like

Detailed description: This system contains the first two measures of the music. The vocal line starts with a whole note rest followed by the lyrics "— you." in the first measure, and "There's no love like" in the second measure. The piano accompaniment consists of a steady eighth-note bass line and a treble line with chords and eighth-note patterns.

Fb x

Cb x

your love, and no oth - er could give

Detailed description: This system contains the next two measures. The vocal line has "your love," in the first measure and "and no oth - er could give" in the second measure. The piano accompaniment continues with similar rhythmic patterns and chord changes.

Gb x

Db 4fr

more love. There's no way, un - less

Detailed description: This system contains the next two measures. The vocal line has "more love." in the first measure and "There's no way, un - less" in the second measure. The piano accompaniment features a more active treble line with eighth-note runs.

Ab 4fr

Eb xx

you're there all the time, all the

Detailed description: This system contains the final two measures. The vocal line has "you're there" in the first measure and "all the time, all the" in the second measure. The piano accompaniment concludes with sustained chords and a final cadence.

Ab
4fr

Ab sus4
4fr

Gb(add2)

way, — yeah. _____

Db
4fr

Gb(add2)

Db
4fr

Ebm
6fr

Ab
4fr

Ab sus
4fr

Ab
4fr

Oh, you can't tell me it's not worth try - ing for. I can't

Ebm
6fr

Ab
4fr

Db
4fr

Db^{sus}
4fr

Db
4fr



help it, there's noth - ing I want more. Yeah, I would fight for you, I'd



Ab
4fr

Ab^{sus}
4fr

Ab
4fr

Gb



lie for you, walk the mile for you, yeah, I'd

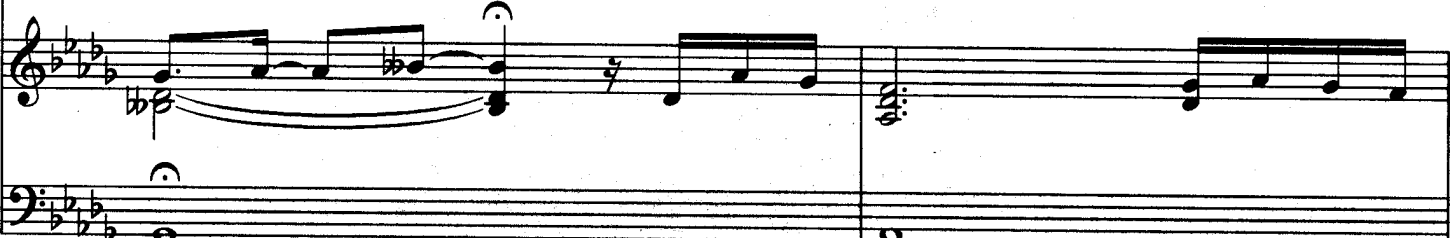


Gbm

Db/Ab
4fr



die for you. You know it's true, ev - 'ry - thing I



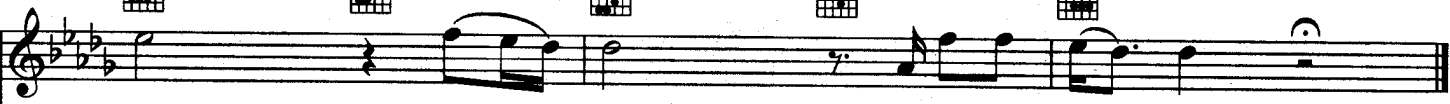
Ab^{sus}
4fr

Ab
4fr

Gb

Gb6

Db
4fr



do, oh, oh, I do it for you.

