

*Mv'mt #*

$\text{♩} = 80$  **1** *Overture*

1 *f* *mf*

7 *f*

$\text{♩} = 140$

13 *mp* *f*

17 *p*

21 *f*

25

29

33 *f*

36

$\text{♩} = 90$

**2** *Aria - Chorus*

1 **12** **2** 1.

Violin - 2nd

2  $\text{♩} = 130$

16 2.

22

26 *mf*

*p*

$\frac{3}{4}$

$\text{♩} = 90$  3 *Aria - Ritornello*

10

13 5 38

56

62 *mp* *mf* *tr*

$\text{♩} = 90$  4 *Trio - Dido - Belinda - 2nd Woman*

1

3 6 2

$\text{♩} = 130$

*p*

$\text{♩} = 180$  5 *Chorus - When Monarchs Unite*

1

8 *f*

$\text{♩} = 60$  6 *Trio - Dido - Belinda - 2nd Woman*

1

25

$\text{♩} = 180$  7 *Duet and Chorus - Fear No Danger*

1

8 32

*f (p)*

44

53

62

71

76

$\text{♩} = 80$  **8** *Recit. - Dido - Belinda - Aeneas*

1 **13**

$\text{♩} = 120$  **9** *Chorus - Cupid only throws the dart*

1

6

11

$\text{♩} = 80$  **10** *Aria - Aeneas - If not for mine*

1 **7**

**11** *Aria - Belinda - Pursue thy conquest*

$\text{♩} = 100$

1

4

1. | 2. **13**

**12** *Chorus - To the hills and the vales*

$\text{♩} = 150$

1

*f*

*p*

9

*f*

16

*mf*

23

*p*

*f*

31

*p*

*f*

38

*mf*

45

*f*

**13** *Dance - The Triumphant Dance*

$\text{♩} = 130$

1

*f*

8

15 *f* *p*

22 *f* *mp*

30 *mp*

37 *p*

44 *f*

$\text{♩} = 130$  **14** *Prelude for the Witches*

1 *f*

7 *p* *tr*

13 *f* *p* *tr*

19

27

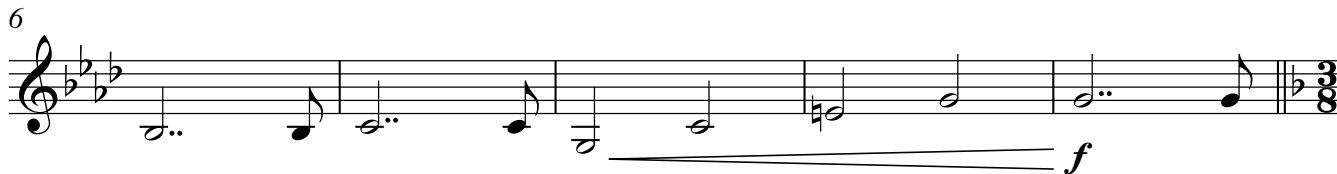
32

6

♩ = 180

1 [15] *Chorus - Harm's Our Delight*

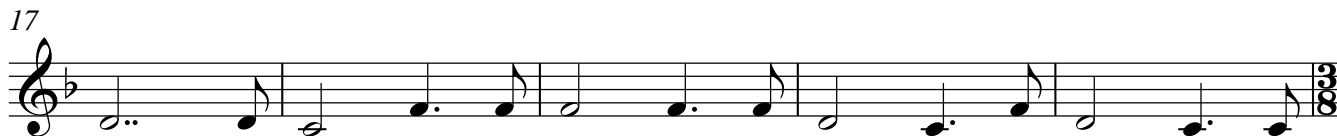
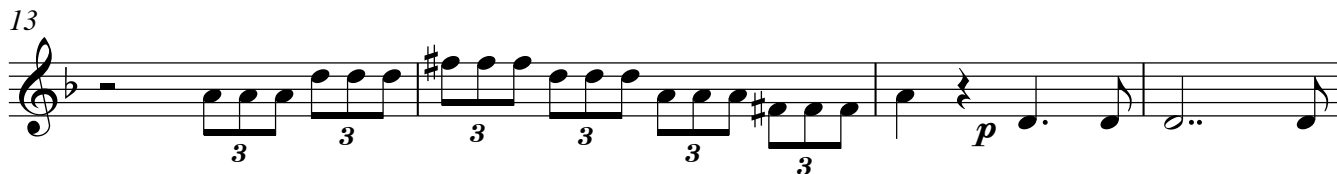
♩ = 130

1 [16] *Aria - The Queen of Carthage, whom we hate*

♩ = 100

1 [17] *Chorus - Ho, Ho, Ho*

♩ = 130

1 [18] *Witches' Trio - Ruin'd ere the set of sun*

♩ = 130 [19] *Chorus - Ho, Ho, Ho*

1

9 *p* *f*

2/2

Detailed description: This block contains the musical notation for the first piece, 'Chorus - Ho, Ho, Ho'. It consists of two staves of music. The first staff starts with a treble clef, a key signature of one flat (B-flat), and a 3/8 time signature. The tempo is marked as quarter note = 130. The music begins with a fermata over the first measure, followed by a series of eighth notes. A dynamic marking of *p* (piano) is placed under the first staff, and a dynamic marking of *f* (forte) is placed under the second staff. The piece concludes with a double bar line and a 2/2 time signature.

♩ = 130 [20] *Witches' Duet - But ere we this perform*

1

13 1. 2.

17 14 1. 2.

2/4 2/4 1/4

Detailed description: This block contains the musical notation for the second piece, 'Witches' Duet - But ere we this perform'. It consists of two staves of music. The first staff starts with a treble clef, a key signature of one flat, and a 2/2 time signature. The tempo is marked as quarter note = 130. The music is primarily a whole note held for the duration of the measure. Above the staff, there are first and second endings marked '1.' and '2.'. The second staff starts at measure 17 and continues with a whole note. It also features first and second endings. The piece concludes with a double bar line and a 1/4 time signature.

♩ = 120 [21] *Chorus - In a deep vaulted cell*

1

9 *f* *pp* *f* *pp* *f*

17 *pp* *f* *pp* *f* *pp* *f*

25 *f* *pp* *f*

30 *pp*

Detailed description: This block contains the musical notation for the third piece, 'Chorus - In a deep vaulted cell'. It consists of five staves of music. The first staff starts with a treble clef, a key signature of one flat, and a 4/4 time signature. The tempo is marked as quarter note = 120. The music features a variety of dynamics: *f* (forte), *pp* (pianissimo), and *f* (forte). The time signature changes to 3/4 at measure 9 and back to 4/4 at measure 17. The piece concludes with a double bar line and a 1/4 time signature.

♩ = 90 [22] *The Echo Dance of the Furies*

1

5 *f* *pp* *f* *tr*

8 *pp* *f* *pp* *f* *(tr)*

Detailed description: This block contains the musical notation for the fourth piece, 'The Echo Dance of the Furies'. It consists of three staves of music. The first staff starts with a treble clef, a key signature of one flat, and a 4/4 time signature. The tempo is marked as quarter note = 90. The music features a variety of dynamics: *f* (forte), *pp* (pianissimo), and *f* (forte). There are trills marked 'tr' above the notes. The piece concludes with a double bar line and a 1/4 time signature.

8

12 (tr)

16

20

23

$\text{♩} = 80$  **23** Act II, Scene ii, Ritornelle

1

7

10

**24a** Aria - Belinda

$\text{♩} = 90$

1

8

15

1.

2.

$\text{♩} = 130$  **24b** Chorus - Thanks to these lonesome vales

1

9

17



$\text{♩} = 130$  **25a** *Aria - 2nd Woman*

1 **4** **4** **20**

$\text{♩} = 130$  **25b** *Dance - Women's Dance*

1 **f** **pp**

9 **tr**

14 **f [p]** **p**

$\text{♩} = 80$  **26** *Duet - Aeneas and Dido - Behold, upon my bending spear*

1 **4** **ff**

8 **2** **ff**

$\text{♩} = 110$  **27** *Aria and Chorus - Haste, haste to town*

1 **10**

10

11

15

19

$\text{♩} = 80$  28

*Aria - Stay Prince, and hear*

**33**

1

$\text{♩} = 140$

29

*Chorus - Sailor's Chorus*

1

8

16

23

31

65

72

mf

79

87

p f

92

p f

$\text{♩} = 160$  **30** *Dance - The Sailor's Dance*

1

f [p]

8

f [p]

14

1. 2. 2

$\text{♩} = 80$  **31** *Witches Duet*

1

18

$\text{♩} = 120$  **32** *Sorceress's Aria*

1

6 1. 2. 12

$\text{♩} = 140$  **33** Chorus - Witches's Chorus

1 *f*

8 *mf*

13 1.

17 2.

$\text{♩} = 80$  **34** Act III, Scene i, Witches' Dance

1 *f* [*p*]

9 1. 2.  $\text{♩} = 100$  *f*

16 *f*

25 *p* *f*

32

37

$\text{♩} = 85$  **35** Aria / Duet - Dido - Belinda - Aeneas

1 54  $\text{♩} = 60$  4

$\text{♩} = 120$  **36** *Chorus - Great minds against themselves conspire*

1

7 *mf*

10

4/4

$\text{♩} = 80$  **37** *Aria - Dido - Thy Hand, Belinda*

1

9

4/4

$\text{♩} = 90$  **38** *Dido's Lament*

1

4

*very softly*

*pp*

10

16

21

27

33

39

44

*tr*

4/4

♩=100 39 Chorus - With drooping wings

1 2

*p*

8

13

*pp*

19

*p* *mp* *mf*

24

*f* *mf*

28

*p*

1. 2.