

QUATUOR IV.

VIOLON 2.

Allegro.

Fr. Schubert, Op. posth.

The musical score for Violon 2 consists of ten staves of music. The key signature is G minor (one flat) and the time signature is 3/4. The tempo is marked **Allegro.** The composer is Franz Schubert, Op. posth.

- Staff 1:** Starts with a fortissimo (**ff**) dynamic, followed by a triplet of eighth notes, then a piano (**p**) dynamic with a triplet of eighth notes, and ends with a pianissimo (**pp**) dynamic.
- Staff 2:** Begins with a piano (**p**) dynamic, followed by a crescendo (**cresc.**) leading to a forte (**f**) dynamic, and another crescendo (**cresc.**) at the end.
- Staff 3:** Features a piano (**p**) dynamic with a sextuplet of eighth notes, followed by a pianissimo (**pp**) dynamic.
- Staff 4:** Starts with a pianissimo (**pp**) dynamic, followed by a crescendo (**cresc.**) leading to a forte (**f**) dynamic.
- Staff 5:** Marked with **A** and **17**, it begins with a fortissimo (**ff**) dynamic and contains several fortissimo (**sf**) accents.
- Staff 6:** Starts with a piano (**p**) dynamic and includes a decrescendo (**decresc.**) leading to a pianissimo (**pp**) dynamic.
- Staff 7:** Features a pianissimo (**pp**) dynamic, followed by a fortissimo-piano (**fp**) dynamic, and ends with a pianissimo (**pp**) dynamic. Marked with **B** and **17**.
- Staff 8:** Continues the melodic line with various articulations and dynamics.
- Staff 9:** Continues the melodic line with various articulations and dynamics.
- Staff 10:** Marked with **C** and **1**, it begins with a fortissimo-piano (**fp**) dynamic and ends with a forte (**f**) dynamic.

VIOLON 2.

3 D

dim. *pp*

f

E

f *f* *p* *pp* *f* *ff*

dim.

f *p* *pp*

1

p *ff* *sf* *sf* *sf*

cresc. *ff* *p*

f *p* *dim.*

f *cresc.* *ff* *f*

ff *pp* *dim.* *f*

ff

F

pp *dim.* *ff*

pp cresc. ff sf sf sf sf-dim. p decresc. pp 3 H sf pp pp I fp pp f ff dim. 3

VIOLON 2.

K
pp

L
f sf f

p pp sf ff sf

p pp dim. p

1 p ff sf sf

sf sf sf sf sf pp

1 M pp

piu mosso.
p pp

3 cresc.

f sempre cresc. ff
Tempo I?
p

fp pp

pp

VIOLON 2.

Andante con moto.

The musical score for Violon 2 consists of 12 staves of music. The key signature is two flats (B-flat and E-flat), and the time signature is common time (C). The tempo is marked "Andante con moto".

- Staff 1:** Starts with a *pp* dynamic. The melody is a series of eighth notes.
- Staff 2:** Starts with a *f* dynamic, followed by a *decrease.* marking, then *p* and *pp*.
- Staff 3:** Features a *p* dynamic, a *p <-> p* dynamic change, and a *pp* dynamic. It includes a triplet of eighth notes.
- Staff 4:** Continues the melodic line with eighth notes.
- Staff 5:** Contains two first endings (1. and 2.) and ends with a *p* dynamic.
- Staff 6:** Starts with a *f* dynamic, followed by a *decrease.* marking, then *p* and another *decrease.* marking.
- Staff 7:** Starts with a *pp* dynamic, followed by a *poco cresc.* marking, then *p* and *pp*. It includes a first ending.
- Staff 8:** Starts with a *pp* dynamic, followed by a *p* dynamic.
- Staff 9:** Features a *cresc.* marking.
- Staff 10:** Starts with a *f* dynamic, followed by a *decrease.* marking, then *p*.
- Staff 11:** Starts with a *pp* dynamic.
- Staff 12:** Starts with a *p* dynamic, followed by two first endings (1. and 2.).

VIOLON 2.

P
ff sf sf sf sf segue.

p

1. 2.

f

pp

pp

ff

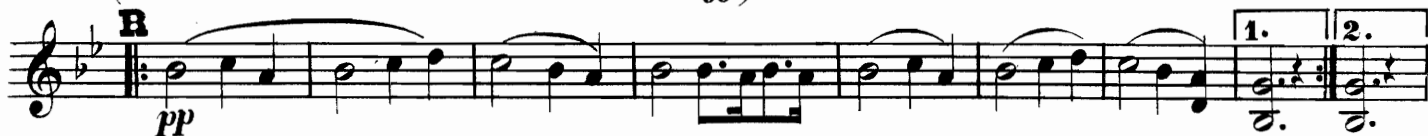
1. 2. *pp*

pp

VIOLON 2.



(La ripetizione poco a poco cresc. sin' al ff)



8 **SCHERZO.**
Allegro molto.

VIOLON 2.

Musical score for Violon 2, Scherzo, Allegro molto. Measures 1-12. The score is written in treble clef with a key signature of one flat (B-flat) and a 3/4 time signature. It features various dynamics including *f*, *sf*, *p*, and *ff*. There are also accents and slurs throughout the passage.

TRIO.

Musical score for Violon 2, Trio section. Measures 13-24. The key signature changes to two sharps (D major) and the time signature changes to 3/4. The tempo is marked *a Tempo*. Dynamics include *pp*, *p*, *rit.*, *fp*, *pp*, *decresc.*, and *pp*. There are also slurs and accents. A **T** (Tutti) marking appears at measure 17, and a **U** (Un poco) marking appears at measure 20.

VIOLON 2.

Presto.

The musical score for Violon 2 is written in G minor (one flat) and 3/4 time. It begins with a **Presto** tempo marking. The first staff starts with a **p** dynamic. The second staff ends with **pp**. The third staff contains a repeat sign with first and second endings. The fourth staff features a **cresc.** marking leading to **f** and **ff**. The fifth staff starts with **p** and ends with **pp**. The sixth staff begins with **f** and ends with **p**. The seventh staff has **decresc.** markings above it, starting with **f** and ending with **pp**. The eighth staff has first and second endings, starting with **ff** and ending with **p**. The ninth staff starts with **f**, has first endings, and ends with **cresc.**. The tenth staff starts with **f**, has first endings, and ends with **pp**. The eleventh staff starts with **ppp**, has first endings, and ends with **ff**. The twelfth staff starts with **sf**, has first endings, and ends with **ff**. The thirteenth staff starts with **ff**. The final staff is marked with **decresc.** and ends with **p**. The piece concludes with a **4** measure rest.

VIOLON 2.

dolce.

dim. *sf* *p* *pp*

f *sf* *sf* *p* *pp*

dim. *sf* *p*

pp *ff* *sf* *sf* *sf* *sf* *sf* *sf* *sf*

p *cresc.* *f*

sf *sf* *sf* *ff* *sf* *sf* *sf*

sf *sf*

ff

pp

VIOLON 2.

The musical score for Violon 2 on page 11 consists of ten staves of music. The key signature is one sharp (F#), and the time signature is 3/4. The score includes various dynamics and performance markings:

- Staff 1:** Starts with a forte (**F**) dynamic. The music is a continuous eighth-note pattern.
- Staff 2:** Continues the eighth-note pattern, ending with a *decresc.* (decrescendo) instruction.
- Staff 3:** Features a piano (**pp**) dynamic and includes a first fingering (**1**) for a note.
- Staff 4:** Continues with **pp** dynamics and includes first (**1**) and third (**3**) fingerings.
- Staff 5:** Starts with a piano (**p**) dynamic and includes an eighth rest (**8**) and a first fingering (**1**).
- Staff 6:** Features a piano (**pp**) dynamic and includes an accent (>) over a note.
- Staff 7:** Continues with a piano (**pp**) dynamic and includes an accent (>) over a note.
- Staff 8:** Shows a crescendo (*cresc.*) leading to a forte (**f**) dynamic, followed by a fortissimo (**ff**) dynamic.
- Staff 9:** Features a piano (**p**) dynamic and includes a piano (**pp**) dynamic section.
- Staff 10:** Starts with a forte (**f**) dynamic, moves to piano (**p**), and includes a first fingering (**1**) at the end.

VIOLON 2.

1^K

p *pp* *f* *p* *pp* *ff*

sf *sf*

p *ff*

sf *f* *p*

ff *sf*

sf *sf* *sf* *sf* *sf* *sf* *decresc.*

decresc. 1 1 2

p *pp*

M

ff *sf* *sf* *sf* *sf* *sf* *sf* *sf* *sf* *sf* *ff*

sf *sf* *sf* *ff*

N

decresc.

3

p *pp*

VIOLON 2.

dim.

sf *p* *pp* *f* *sf* *sf* *sf* *sf* *sf*

pp *pp* *dolce.*

dim. *ff*

pp *p* *ff* *sf* *sf* *sf* *sf* *sf* *sf* *sf* *sf*

P *p* *cresc.* *f* *sf*

sf *sf* *sf* *sf* *sf* *sf* *ff*

sf *sf*

Q

sf *sf* *sf* *sf* *sf* *sf* *sf* *sf* *sf* *sf*

sf *sf* *f* *pp*

R

VIOLON 2.

decresc.
p *sf*
pp
f *p* *T* *pp*
cresc. *ff* *sf* *sf*
Prestissimo.
sf *sf* *pp*
p *cresc.* *ff* *sf* *sf* **1**
p *ff* *sf* *sf*
sf *sf* *sf* *sf* *sf* *sf* *sf* *sf* *sf* *sf* *sf* *sf* *sf* *sf*
sf *sf* *p* *cresc.*
ff