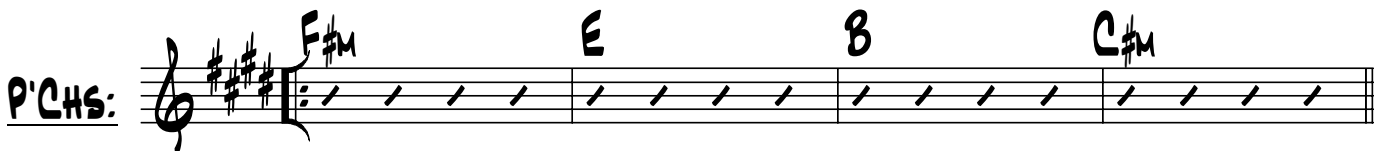
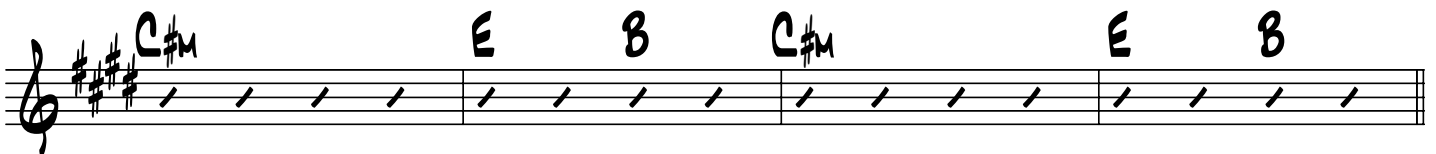
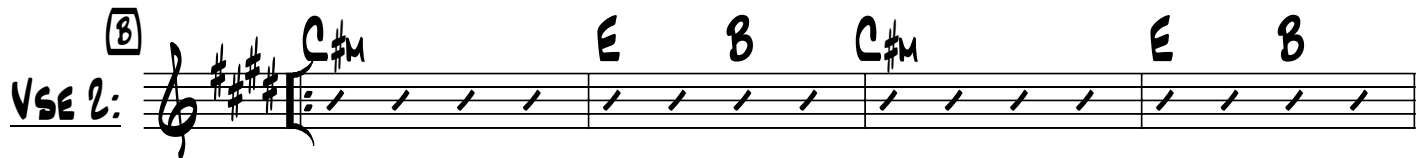
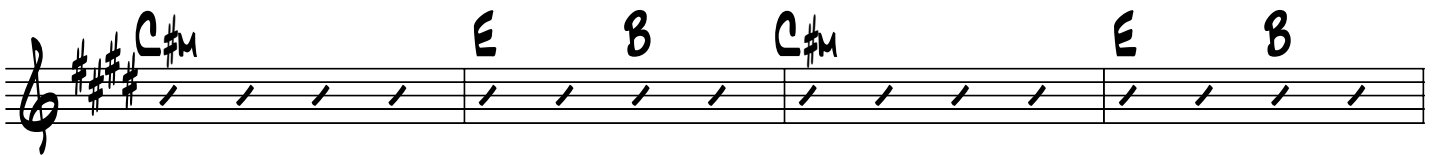
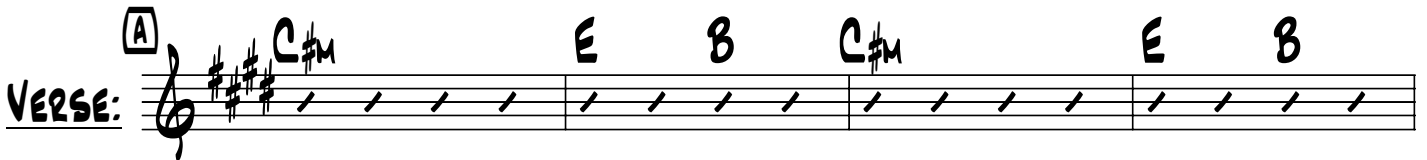
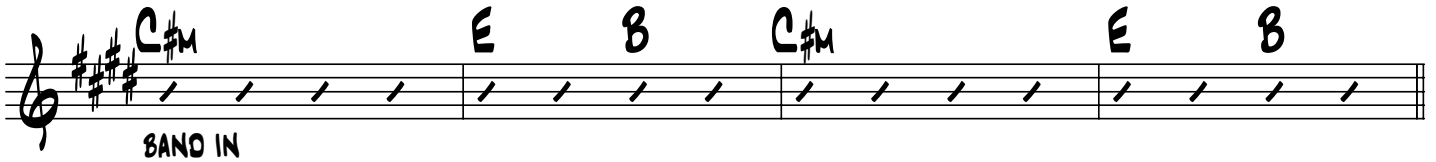
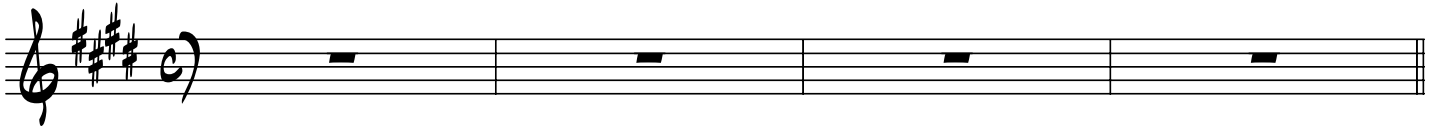


(♩ = 146)

FOLLOW THE SON

WORDS AND MUSIC BY JAY COOK AND GIO GALANTI

KEYS



CHORUS: C A E B C#m B

A E B B

A E B C#m B

A C#m B A

C E B C#m E B

C#m E B C#m E B

1 C#m E B C#m E B

2 C#m A E B A C#m B/D#

INST:

E

A E B A C#m B/D#

F

PCHS:

F#m E B E B (C#m ON RPT)

G

CHORUS:

A E B C#m B

A E B B

A E B C#m B

A C#m B A

H

TAGS:

C#m E B C#m E B C#m

FINE