

# Hymne

ERA

B $\flat$  Dm Gm B $\flat$ /F E $\flat$

6 B $\flat$  Cm7 F

13 **10**

30

38 **8**

53 **2**

60

# Hymne

ERA

6

11

16

22

29

36

41

47

53

60

64

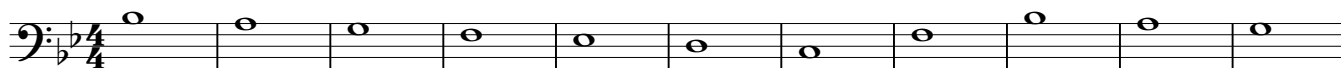
Trumpet in B♭

# Hymne

ERA



# Hymne



12



23



34



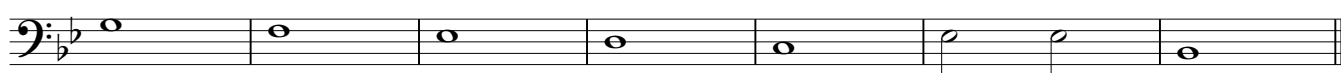
45



56



61



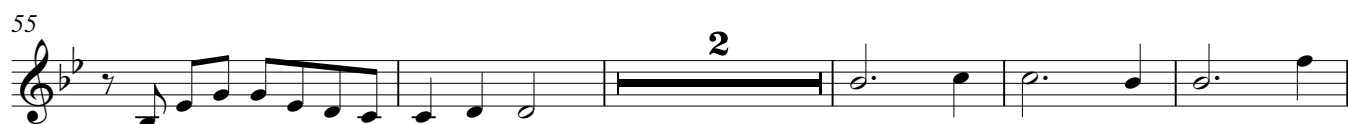
# Hymne

ERA

11 16 22 29 37 42 48 54 61 64

Bb Dm Gm Bb/F Eb  
Bb Cm7 F Bb Dm  
Gm Bb/F Eb Bb Cm7  
Eb Gm Eb F Bb/D Eb Gm  
Eb F Bb/D Eb F Bb Dm  
Gm Bb/F Eb Bb/D Cm7  
Eb F Bb Dm Gm  
Bb/D Cm7 Eb F Bb Dm Gm  
Bb/F Eb Bb Cm7 Eb F Bb Dm  
Gm Bb/F Eb  
Bb Cm7 Eb

# Hymne



Bass

# Hymne

ERA

