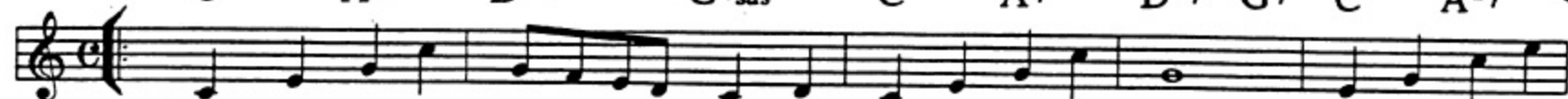


# HAVE YOURSELF A MERRY LITTLE CHRISTMAS

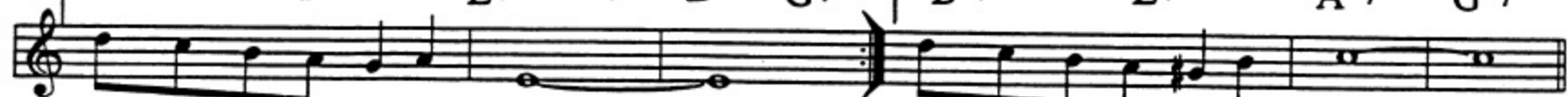
Marten/Blane 1944

C A-7 D-7 G7<sup>sus4</sup> C A7 D-7 G7 C A-7



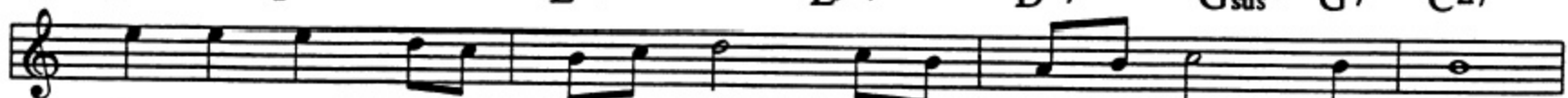
Have your-self a mer-ry lit-tle Christ-mas, let your heart be light, from now on, our  
 Have your-self a mer-ry lit-tle christ-mas, make the yule-tide gay, from now on, our  
 Through the years we all will be to - geth - er, if the fates al - low, hang a shin-ing

1. D-7 B-7<sup>b5</sup> E7 A7 D-7 G7 2. B-7<sup>b5</sup> E7 A-7 G-7



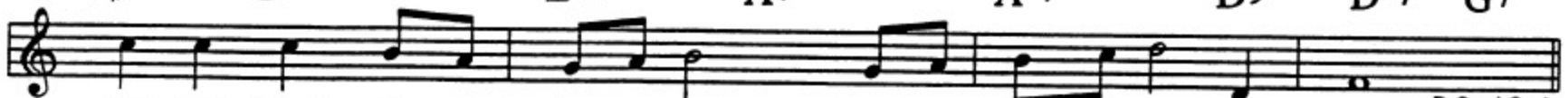
trou - bles will be out of sight. trou - bles will be far a - way.

F $\Delta$ 7 F-6 E-7 E $\flat$ o7 D-7 G<sup>sus4</sup> G7 C $\Delta$ 7



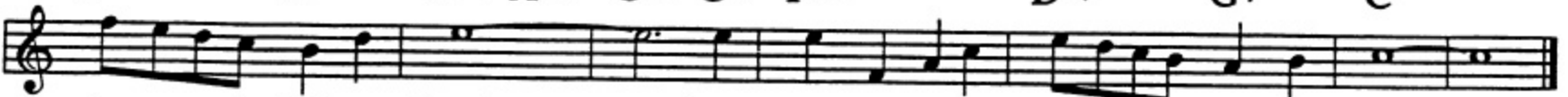
Here we are as in old - en days, hap - py gold - en days of yore,

F $\sharp$ -7<sup>b5</sup> B7<sup>b9</sup> E-7 A7 A-7 D9 D-7 G7



faith - ful friends who are dear to us, gath - er near to us once more. *D.C. al Coda*

B-7<sup>b5</sup> E7<sup>b9</sup> A-7 A $\flat$ +7 G-7 G $\flat$ 7 F $\Delta$ 7 D-7 G7 C



star up-on the high-est bough, and have your-self a mer-ry lit-tle Christ-mas now.

# Have Yourself

from the MGM film Meet Me in St. Louis  
Words and Music by Hugh Martin and Ralph Blane

## a Merry Little Christmas

A-21  
T-90  
V-A31

Slowly and delicately

Chords: C, Am, Dm7, G7, C, Am7, Dm7, G7

Have your-self a mer-ry lit-tle Christ-mas; Let your heart be light.

*mp*

Chords: C, Am7, Dm7, G7, E7, A7, D7, G7

From now on, our trou-bles will be out of sight.

Chords: C, Am, Dm7, G7, C, Am7, Dm7, G7

Have your-self a mer-ry lit-tle Christ-mas; Make the Yule-tide gay.

Chords: C, Am7, Dm7, E7-9, Am, G#aug, C/G

From now on, our trou-bles will be miles a-way.

*cresc.*

**F#ACE** **F#m7-5** **Fm+7** **Em7** **Ebdim** **Dm7** **G7** **Cmaj7**  
 5fr. 4fr.

Here we are as in old-en days, hap-py gold-en days of yore;

*mf*

**F#ACE** **F#m7-5** **B7** **Em** **Eb7** **G/D** **Am7** **Am7** **Dm7/G** **G7**  
 5fr. 5fr. 3fr.

Faith-ful friends who are dear to us gath-er near to us once more.

*mp sub.*

**C** **Am7** **Dm7** **G7** **C** **Am7** **Dm7** **G7**

Through the years we all will be to-geth-er If the Fates al-low.

**Em7** **Am7** **Bm7-5** **E7-9** **Am** **G#CE** **G#aug**

Hang a shin-ing star up-on the high-est bough, And

*cresc.* *f* *pp sub.*

**Fmaj7** **Dm7** **G7-9** **C** **N.C.** **Cmaj7**

have your-self a mer-ry lit-tle Christ-mas now.