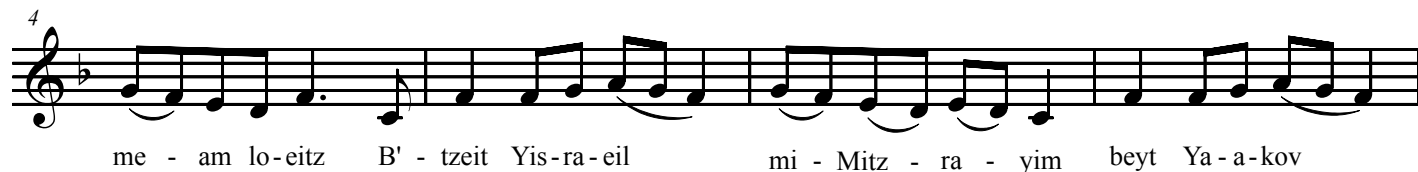


Hallel



35

 ot kiv - ney tzon kiv - ney tzon mi - lif - ney A - don mi - lif - ney A -

39

 don chu - li a - retz chu - li a - retz mi - lif - ney mi - lif - ney E-lo'-ah Ya'-a -

44

 kov E-lo'-ah Ya'-a - kov ha-hof-chi-ha - tzur ha-hof-chi-ha - tzur - a - gam ma -

48

 yim a - gam ma - yim ha - la - mish ha - la - mish l' - may-no-may -

52

 yim l' - may-no may - yim A - do - nay z'-cha-ra-nu y' - va - reich y' -

57

 va-reich et beyt Yis - ra' - eil y' - va-reich et beyt A - ha - ron y' -

61


 va-reich yir' - ey A - do - nay hak' - ta - nim im hag' - do - lim

65

 Yo-seif A - do - nay a - ley - chem a - ley-chem v' - al b' - ney - chem B'ru -


69

 chim - a - tem l'A - do - nay o - seih sha - ma - yim va' - a - retz ha - sha -

73

 ma - yim sha - ma - yim l'A - do - nay v' - ha' - a - retz na - tan liv - ney a - dam Lo ha -

77

 mei - tim y' - ha - l' - lu Yah v' - lo kol yor' - dey du - ma V' - a -


81

 nach - nu n' - va - reich Yah mei' a - tah v' - ad - o - - lam - mei' - a - tah - v' - ad o - -

86

 lam Ha - l' - lu Yah Ha - l' - lu et A - do - nay kol -

92

 Kol go - yim shab' - chu - hu shab' - chu - hu kol ha' - u - mim ki ga - var


98

 ki ga - var ki ga - var a - ley - nu chas - do ve' - e - met A - do - nay l' - o - lam Ha - l' - lu

104

 Yah Ho - du l'A - do - nay ki ki tov ki l' - o - lam

111

 ki l' - o - lam chas - do Yom - ar na - yom - ar na yom - ar na Yis - ra' - eil

117

 ki l' - o - lam ki l' - o - lam chas - do Yom' - ru na yom' - ru na

123



yom'-ru na veyt A-ha-ron ki l' - o - lam ki l' - o - lam chas - do

129



yom'-ru na yom'-ru na yom'-ru na yir' - ey A-do-nay ki l' - o - lam

135



ki l' - o - lam chas - do Min ha-mei-tzar ka - ra-ti Yah a - na-ni

140



va - mer-chav Yah Min ha-mei-tzar ka - ra-ti Yah a - na-ni

144



va - mer-chav Yah a - na-ni a - na - ni a - na-ni va - mer-chav Yah

149



a - na-ni a - na - ni a - na-ni va - mer-chav Ya Pit - chu -

154




li sh'a - rey tze - dek a - vo vam o-deh Yah

161



Pit - chu li - sh'a - rey tze - dek a - vo vam o-deh

167



Yah Ze ha - sha' - ar l'A - do - nay tza - di -

174

kim ya - vo' - u vo Ze - ha - sha' - ar l'A - do - nay

181

tza - di - kim ya - vo' - u vo o - d' - cha ki a - ni - ta - ni

187

va - t' - hi li liy - shu' - a o - d' - cha ki a - ni - ta - ni va - t' - hi li

192

liy - shu' - a E - ven ma' - a - su ha - bo - nim hay' - ta - l' - rosh pi - nah

197

E - ven ma' - a - su ha - bo - nim hay' - ta l' - rosh pi - nah Mei' - eit A - do - nay

202

hay' - ta zot hi - nif - lat - b' - ey - ney - nu Mei' - eit A - do - nay hay' - ta aot

207

hi nif - lat b' - ey - ney - nu - Ze ha - yom a - sah A - do - nay -

211

na - gi - la v' - nis - m' - cha vo Ze ha - yom a - sah A - do - nay na - gi - la v' -

216

nis - m' - cha - vo A - na A - do - nay ho - shi' - ah na A - na A - do - nay ho - shi' - ah na



A - na - A - do - nay ho - shi - ah na A - na A - do - nay ho - shi - ah na A - na A - do - nay hatz - li - cha na



A - na A - do - nay hatz - li - cha na A - na A - do - nay hatz - li - cha - na A - ba - A - do - nay hatz - li - cha na



Ba - ruch ha - ba b' - sheim A - do - nay be - rach - nu - chem mi - beyt A - do - nay



Ba - ruch ha - ba b' - sheim A - do - nay be - rach - nu - chem mi - beyt A - do - nay



Eil A - do - nay va - ya - er - la - nu is - ru chag ba' - a - vo - tim ad kar - not ha - miz - bei - ach



Eil A - do - nay va - ya - er la - nu is - ru chag ba' - a - vo - tim ad kar - not ha - miz - bei - ach



Ei - li A - tah v' - o - de - ka A - lo - hay a - rom' - me - ka Ei - li A - tah



v' - o - de - ka - v' - E - lo - hay a - ro - m' - me - ka Ho - do l' A - do - nay ki tov



ki l' - o - lam chas - do Ho - du l' A - do - nay ki tov ki l' - o - lam

256



chas - do hey yai - da-dai ...

This musical staff contains measures 256 through 260. It begins with a treble clef, a key signature of one sharp (F#), and a common time signature. The melody consists of eighth and quarter notes, with a slur over the first four notes. The lyrics "chas - do hey yai - da-dai ..." are written below the staff.

261



This musical staff contains measures 261 through 265. It continues the melody from the previous staff, featuring a mix of eighth and quarter notes. The staff concludes with a double bar line.

267



267



This section contains two musical staves. The first staff, labeled 267, shows measures 267 through 271, featuring a melody of quarter and eighth notes. The second staff, labeled 272, shows measures 272 through 276, continuing the melody with quarter and eighth notes. Both staves end with a double bar line.